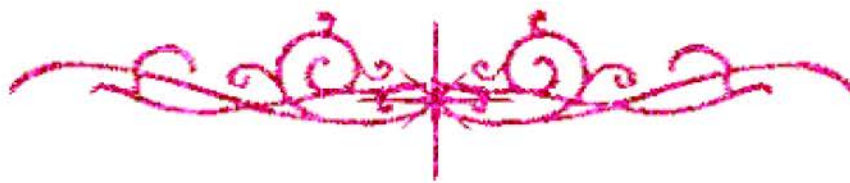
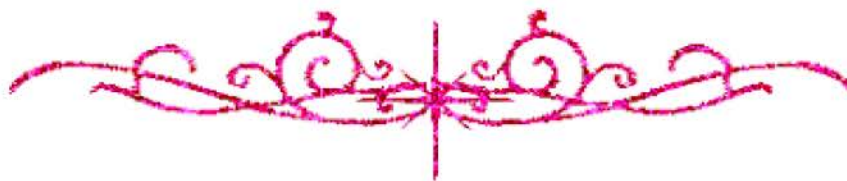


بِسْمِ اللَّهِ الرَّحْمَنِ الرَّحِيمِ





شبكة المعلومات الجامعية التوثيق الالكتروني والميكروفيلم



جامعة عين شمس

التوثيق الإلكتروني والميكروفيلم

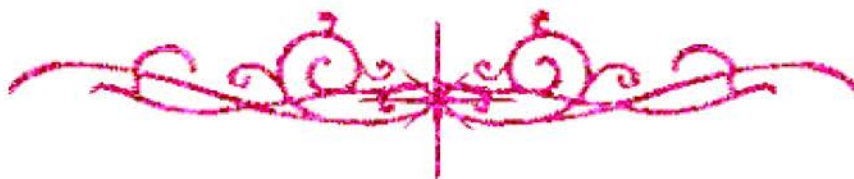
قسم

نقسم بالله العظيم أن المادة التي تم توثيقها وتسجيلها
علي هذه الأقراص المدمجة قد أعدت دون أية تغييرات



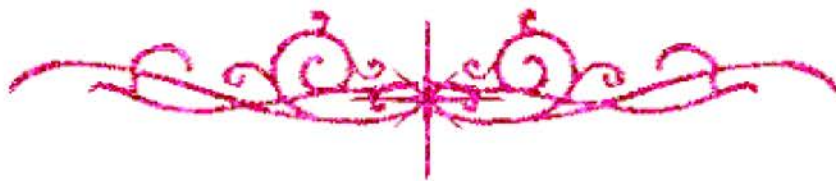
يجب أن

تحفظ هذه الأقراص المدمجة بعيدا عن الغبار



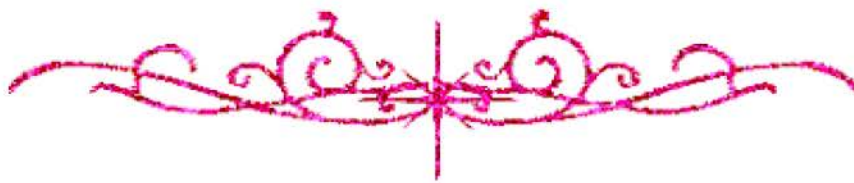


بالرسالة صفحات لم ترد بالأصل





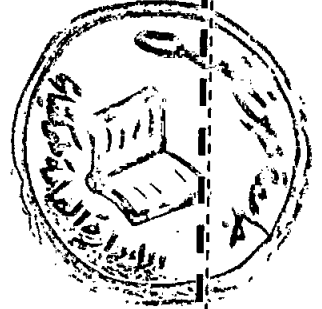
بعض الوثائق الأصلية تالفة



**Visualization & Evaluation of Proximal
Segments of Coronary Arteries Using Two
Dimensional High - Resolution Transthoracic
Echocardiography**

*Thesis
Submitted in partial fulfillment of
Master Degree of Cardiology*

*Presented by
Amira Handy Mohamed
M.B.B.ch*

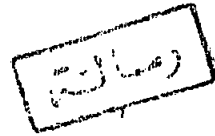


616.123
A. H.

*Supervised By
Dr. Ahmed Nassar
Prof. Of Cardiology
Ain Shams University*

69008

*Dr. Nabil Farag
Ass. Prof. Of Cardiology
Ain Shams University*



*Dr. Sameh Thabet
Lecturer of Cardiology
Ain Shams University*

**Ain Shams University
2002**

Handwritten signature or initials, possibly "M. J."

Handwritten signature or initials, possibly "C. J."

Handwritten signature or initials, possibly "M. J."

Handwritten signature or initials, possibly "M. J."

Acknowledgment

Thanks first and last to God almighty for helping me to proceed and complete this work.

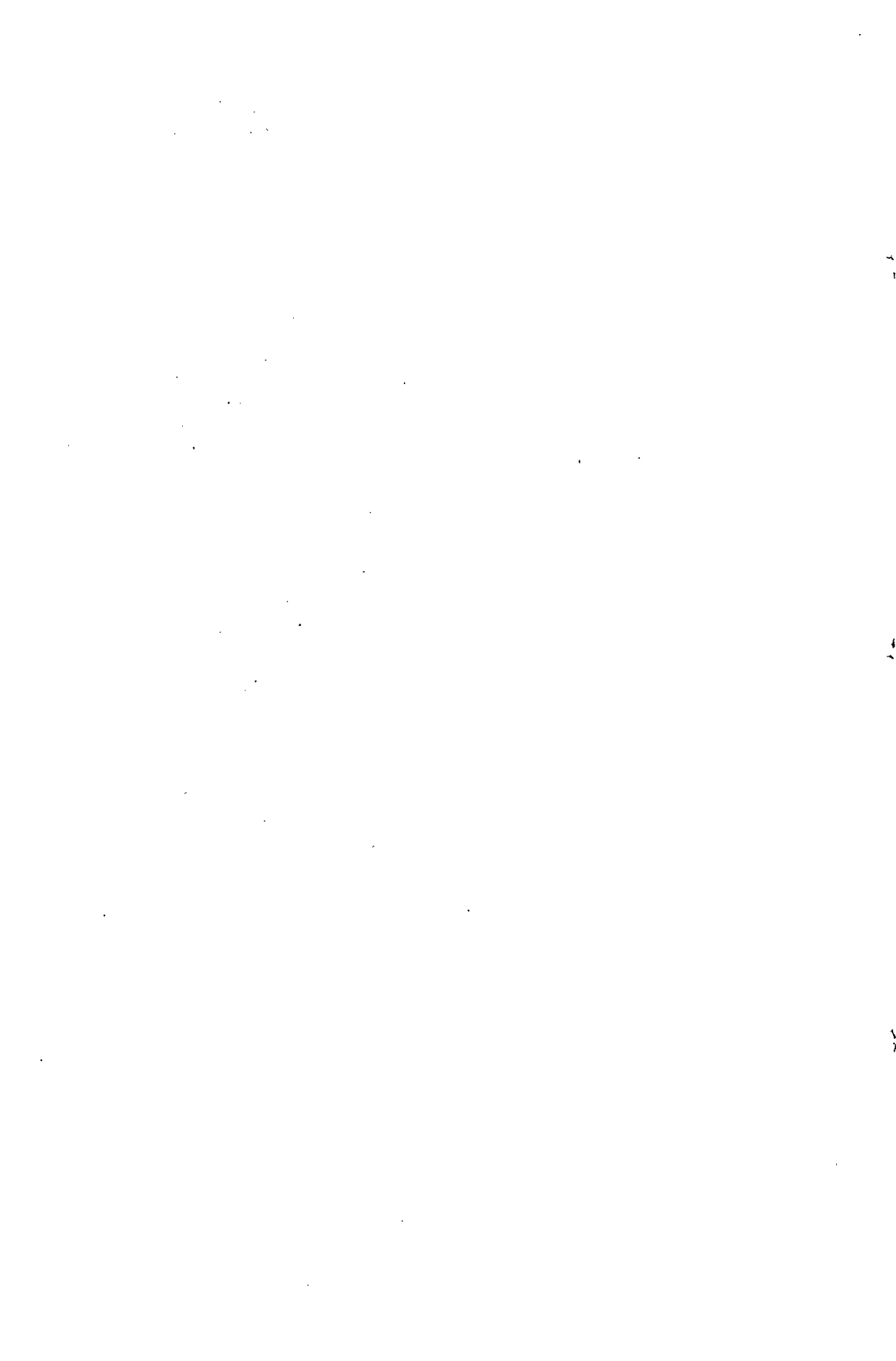
I would like to express my deep gratitude to Professor Dr. Ahmed Nassar, Professor of Cardiology, Ain Shams University for his wise guidance and unlimited support.

I wish to offer my deepest thanks and my sincere gratitude to Prof. Nabil Farag, Assistant Professor of Cardiology, Ain Shams University.

It has been a great pleasure for me to have the help and support of Dr. Sameh Thabet, Lecturer of Cardiology to whom I owe a profound appreciation and deepest thanks.

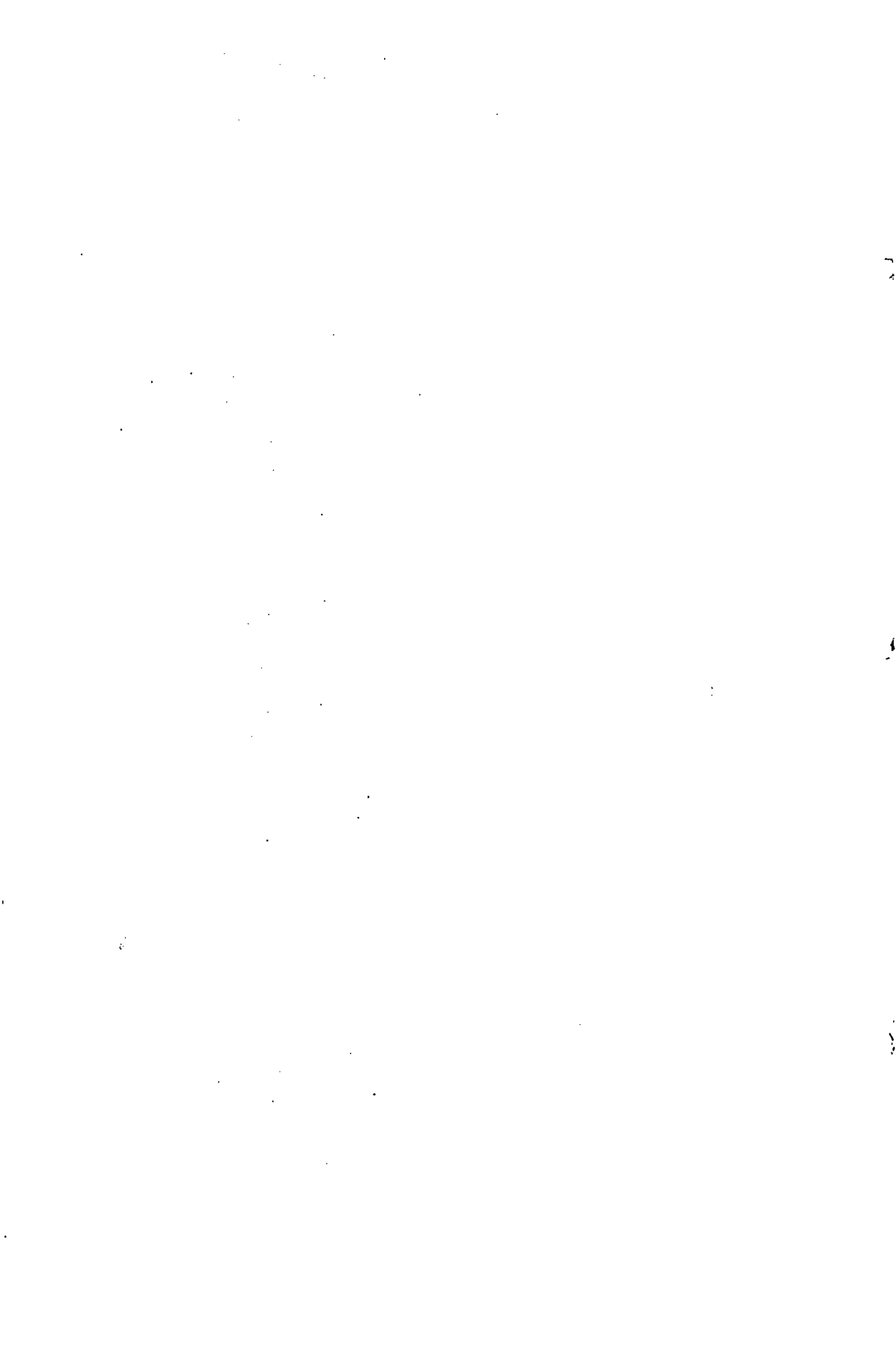
My deepest thanks to all persons who were subjected to this study wishing them health and long life.

Last but not least, I would like to express my deepest appreciation and gratitude to all family members who have been very supportive to me, as usual, during the course of this thesis.



CONTENTS

	Page
Introduction	1
Aim of the work	3
Review of Literature	4
* Vascular Biology Of Atherosclerosis	4
* Arterial Remodeling & Coronary artery Disease	26
* Role of Echocardiography in Atherosclerotic Coronary Disease	36
* Non Invasive Methods Of Visualization of The coronaries	52
* High Resolution Transthoracic Echocardiography in Assessment Of Coronary Arteries	73
Patients & Methods	90
Results	100
Discussion	117
Conclusion & Recommendation	130
Limitations	133
Summary Of The Study	135
References	137
Master Tables	
Arabic Summary	



List of Abbreviations & Acronyms

AHA:	American Heart Association.
Am. J. Pathol:	American Journal of Pathology.
Am. J. Cardiol.:	American Journal of Cardiology.
Ann. NY. Acad Sci:	Annual New York Academy of Science.
Ann. Inter. Med.:	Annual International Medical.
Br. Heart J.:	British Heart Journal.
C.A.:	Coronary Angiography.
C.F.V.R.:	Coronary Flow Velocity Reserve.
Clin. Cardiol. :	Clinical Cardiology.
Echo:	Echocardiography.
E.E.M.:	External Elastic Membrane.
Eur. Heart J.:	European Heart Journal.
HR2DTTE:	High Resolution 2-Dimensional Transthoracic Echocardiography.
I.V.U.S:	Intravascular Ultrasound.
J.Am.Soc.Echo:	Journal of American Society of Echocardiography.
J.Am.Coll. Cardiol.:	Journal of American College of Cardiology.
J.Vasc.Surg.:	Journal of Vascular Surgery.
LAD:	Left Anterior Descending.
LDL:	Low – Density Lipoprotein.
LMCA:	Left main Coronary Artery.
LCX:	Left Circumflex.
M.C.P.1:	Monocyte Chemoattractant protein 1.
M-CSF. :	Macrophage Colony Stimulating Factor.
M.I.G.:	Monokine induced by interferon Gamma.
MRI:	Magnetic Resonance Imaging.

N. Engl. J. Med.: National English Journal of Medicine.
PCI: Percutaneous Coronary Intervention.
PDGF. : Platelet Derived Growth Factor..
PTCA: Percutaneous Transluminal Coronary
Angioplasty.
RCA. : Right Coronary Artery.
RR. : Remodeling Ratio.

List of Tables

Table No.	Title	Page
<u>Table 1:</u>	Gender and age distribution among Group B & Group A.	101
<u>Table 2:</u>	Pre-catheterization presentation among the studied Groups.	104
<u>Table 3:</u>	Distribution of Proximal Coronary Artery lesions among Group A.	106
<u>Table 4:</u>	Results of visualizing proximal coronary arteries and average length. Seen of each part among Group A & Group B.	107
<u>Table 5:</u>	Sensitivity & specificity of HR2DTTE in detecting lesions of proximal coronary segment.	109
<u>Table 6:</u>	Average diameters and wall thickness of proximal Coronary arteries among Group A & Group B.	111
<u>Table 7:</u>	External, internal diameter & wall thickness Distribution among patients with significant or non-significant LAD & Group B ₂ individuals.	113
<u>Table 8:</u>	Study of risk factor effect on proximal coronary artery wall thickness.	116

