



شبكة المعلومات الجامعية

بِسْمِ اللَّهِ الرَّحْمَنِ الرَّحِيمِ





شبكة المعلومات الجامعية



# شبكة المعلومات الجامعية

## التوثيق الالكتروني والميكرو فيلم

# جامعة عين شمس

التوثيق الالكتروني والميكرو فيلم

## قسم

نقسم بالله العظيم أن المادة التي تم توثيقها وتسجيلها  
علي هذه الأفلام قد اعدت دون أية تغيرات



## يجب أن

تحفظ هذه الأفلام بعيداً عن الغبار

في درجة حرارة من 15 – 20 مئوية ورطوبة نسبية من 20-40 %

To be kept away from dust in dry cool place of  
15 – 25c and relative humidity 20-40 %



شبكة المعلومات الجامعية



# بعض الوثائق الأصلية تالفة



شبكة المعلومات الجامعية



بالرسالة صفحات  
لم ترد بالأصل



*South Valley University,  
Faculty of Science (Sohag)*

# **Mycoflora and Mycotoxin of Sorghum Grains in Egypt**

## ***A THESIS***

*Submitted to the Faculty of Science  
(Sohag) South Valley University*

*Submitted to fulfill the requirements of the  
degree of Doctor of Philosophy  
(Botany)*

By

**Samia Soliman Ahmed**

1420 - 1999

B 11.0





*South Valley University*  
*Faculty of Science (Sohag)*

***Approval Sheet***  
***Of The Ph. Thesis and Degree***

**Name : Samia Soliman Ahmed**

**Title : Mycoflora and Mycotoxin of Sorghum grains in Egypt.**

**Supervision**

**Prof. Dr. Ismail A. El-Kady**

Prof. and Head of Botany Dept.  
Faculty of Science, Assiut Univ.

**Prof.Dr. Osman M.O. El-Maghraby**

Prof. of Microbiology Botany Dept.  
Faculty of Science at Sohag,  
South Valley Univ.

**Dr. Sabah S. Mohamed**

Assist. Prof. of Botany Dept.  
Faculty of Science at Sohag  
South Valley Univ.

**Examiners:**

**Prof. Dr. Mohamed I. Ali**

Prof. Microbiology  
Faculty of Science, Cairo Univ.

**Prof. Sobhy I.I. Abdel-Hafeez**

Prof. of Microbiology  
Faculty of Science, Assiut Univ.

**Prof. Dr. Ismail A. El-Kady**

Prof. and Head of Botany Dept.  
Faculty of Science, Assiut Univ.

**Prof.Dr. Osman M.O. El-Maghraby**

Prof. of Microbiology Botany Dept.  
Faculty of Science at Sohag,  
South Valley Univ.

**Faculty Board of graduate studies**

**Prof. M. Mustafa**  
Vice - Dean For Graduate  
Studies and Researches



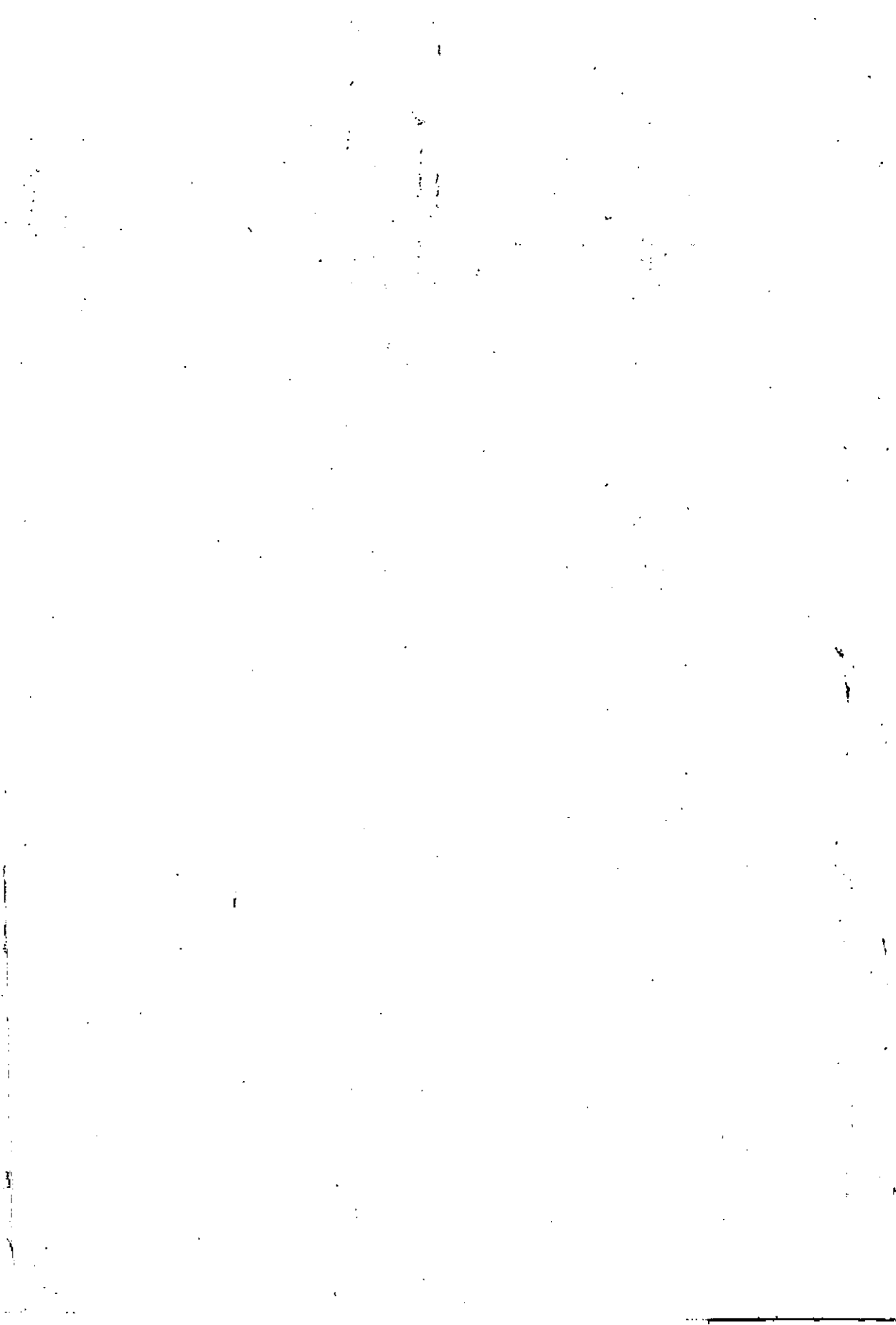




## **List of Figures**

	<b>Page</b>
<b>1: Figure (1): Structure of Aflatoxins</b>	<b>10</b>
<b>2: Figure (2): Structure of Sterigmatocystin</b>	<b>12</b>
<b>3: Figure (3): Structure of Ochratoxins</b>	<b>12</b>
<b>4: Figure (4): Structure of Citrinin</b>	<b>13</b>
<b>5: Figure (5): Structure of the main nucleus of trichothecenes</b>	<b>14</b>
<b>6: Figure (6): Structure of Zearalenone</b>	<b>15</b>
<b>7: Figure (7): Map of Upper Egypt</b>	<b>25</b>

---



## List of Tables

No.	Caption	Page
1	Places from which samples of sorghum kernels (15 – 20 days before harvesting) were collected and their moisture contents (M. C.).	21
2	Places from which samples of stored sorghum grains (~ 6 months) were collected and their moisture contents (M. C.).	23
3	Classification of <i>Aspergillus</i> species isolated in this investigation based on the key of Raper and Fennell (1965).	36
4	Classification of <i>Penicillium</i> species isolated in this investigation based on key of Raper and Thom (1949).	37
5	different names of <i>Penicillium</i> species frequently used in this investigation by different authors.	38
6	List of fungi other than <i>Aspergillus</i> and <i>Penicillium</i> isolated in this investigation.	40
7	Different names of fungi frequently used in this investigation based on anamorphs and telemorphs.	43
8	Total counts (calculated to 21 grains in each samples) of fungal genera and species isolated from the surface of preharvest sorghum grains on 1% glucose- Czapek's agar at $28 \pm 1^{\circ}\text{C}$ .	46
9	Number of cases of isolation (out of 40 samples) of fungal genera and species, their total (calculated to 840 grains) in very samples) and percentage (calculated to total fungi) counts isolated from the surface of preharvest sorghum grains (10-15 days before harvest) on 1% glucose-Czapek's agar at $28 \pm 1^{\circ}\text{C}$ .	48
10	Total counts (calculated to 21 grains in each samples) of fungal genera and species isolated from the surface of preharvest sorghum grains on 2.1% cellulose-Czapek's agar at $28 \pm 1^{\circ}\text{C}$ .	54

- 11 Number of cases of isolation (out of 40 samples) of fungal genera and species, their total (calculated to 840 grains) and percentage (calculated to total fungi) counts isolated from the surface of preharvest sorghum grains (10-15 days before harvest) on 2.1% cellulose-Czapek's agar at  $28 \pm 1^{\circ}\text{C}$ . 56
- 12 Total counts (calculated to 21 grains in each samples) of fungal genera and species isolated from the preharvest sorghum grains after surface disinfection on 1% glucose-Czapek's agar at  $28 \pm 1^{\circ}\text{C}$ . 60
- 13 Number of cases of isolation (out of 40 samples) of fungal genera and species, their total (calculated to 840 grains in every samples) and percentage (calculated to total fungi) counts isolated from the surface-disinfecting preharvest sorghum grains (10-15 days before harvest) on 1% glucose-Czapek's agar at  $28 \pm 1^{\circ}\text{C}$ . 62
- 14 Total counts (calculated to 21 grains in each samples) of fungal genera and species isolated from the preharvest sorghum grains after surface disinfection on 2.1% cellulose-Czapek's agar at  $28 \pm 1^{\circ}\text{C}$ . 63
- 15 Number of cases of isolation (out of 40 samples) of fungal genera and species, their total (calculated to 840 grains in every samples) and percentage (calculated to total fungi) counts isolated from the surface-disinfecting preharvest sorghum grains (10-15 days before harvest) on 2.1% cellulose-Czapek's agar at  $28 \pm 1^{\circ}\text{C}$ . 65
- 16 Total counts (calculated to 21 grains in each samples) of dominant fungal genera and species isolated from the surface of stored sorghum grains on 1% glucose-Czapek's agar at  $28 \pm 1^{\circ}\text{C}$ . 71
- 17 Number of cases of isolation (out of 40 samples) of fungal genera and species, their total (calculated to 840 grains in every samples) and percentage (calculated to total fungi) counts isolated from the surface of stored sorghum grains (stored 6-9 months on 1% glucose-Czapek's agar at  $28 \pm 1^{\circ}\text{C}$ ). 73
-

---

18	Total counts (calculated to 21 grains in each samples) of dominant fungal genera and species isolated from the surface of stored sorghum grains on 2.1% cellulose-Czapek's agar at $28 \pm 1^{\circ}\text{C}$ .	77
19	Number of cases of isolation (out of 40 samples) of fungal genera and species, their total (calculated to 840 grains in every samples) and percentage (calculated to total fungi) counts isolated from the surface of stored sorghum grains (stored 6-9 months on 2.1% cellulose-Czapek's agar at $28 \pm 1^{\circ}\text{C}$ .	81
20	Total counts (calculated to 21 grains in each samples) of fungal genera and species isolated from the stored sorghum grains after surface disinfection on 1% glucose-Czapek's agar at $28 \pm 1^{\circ}\text{C}$ .	83
21	Number of cases of isolation (out of 40 samples) of fungal genera and species, their total (calculated to 840 grains in every samples) and percentage (calculated to total fungi) counts isolated from the surface-disinfecting stored sorghum grains (stored 6-9 months) on 1% glucose-Czapek's agar at $28 \pm 1^{\circ}\text{C}$ .	87
22	Total counts (calculated to 21 grains in each samples) of fungal genera and species isolated from the stored sorghum grains after surface disinfection on 2.1% cellulose-Czapek's agar at $28 \pm 1^{\circ}\text{C}$ .	88
23	Number of cases of isolation (out of 40 samples) of fungal genera and species, their total (calculated to 840 grains in every samples) and percentage (calculated to total fungi) counts isolated from the surface-disinfecting stored sorghum grains (stored 6-9 months) on 2.1% cellulose-Czapek's agar at $28 \pm 1^{\circ}\text{C}$ .	90
24	Biological assay (brine shrimp test), mycotoxins and predominant fungi (colonies/21 grains) isolated from toxic samples of fresh sorghum grains (10-15 days before harvest).	97
25	Biological assay (brine shrimp test), mycotoxins identified ( $\mu\text{g/kg}$ dry grains) and predominant mycotoxin-producing fungi (colonies/21 grains) isolated from toxic samples of stored sorghum grains (6-9 months).	98

---