

DIAGNOSTIC ASPECTS OF C.T. IN PLEURAL LESIONS

THESIS

Submitted in partial fulfillment of

MASTER DEGREE IN
RADIO DIAGNOSIS



BY

Heba Mohamed El Sakhawwy
M.B., B.Ch.

Under Supervision of

Prof. Dr. Zeinab Abdallah

*Prof. of Radiodiagnosis
Faculty of Medicine
Ain Shams University*

Faculty of Medicine
Ain Shams University
1993



بِسْمِ اللَّهِ الرَّحْمَنِ الرَّحِيمِ

"وَمَا أَوْتَيْتُمْ مِنَ الْعِلْمِ إِلَّا قَلِيلًا"

صدق الله العظيم

سورة الإسراء (٨٥)



To My Parents

ACKNOWLEDGEMENT

I would like to express my great appreciation and gratitude to Prof. Dr. Feinab Mohamed Abdallah, Professor of Radiodiagnosis, Ain Shams University, for her wise guidance and sincere supervision.

I would also like to express my deepest thanks to Dr. Khaled Talaat Khairy, Assistant Professor of Radiodiagnosis, Ain Shams University, for his continuous support and advice he offered me during my work.

Finally, my special lovely regards to my Mother, who encouraged, helped and supported the completion of this work.

ABSTRACT

This study was designed to determine the value of computed tomography in diagnosis of pleural diseases.

At first, we started by Anatomy (Basic and C.T. anatomy) of the pleura, pathology of common diseases of the pleura, technique of examination, C.T. manifestations with illustrative cases, then summary and conclusion.

CONTENTS

	Page
<i>Introduction & Aim of Work</i>	1-2
<i>Basic & CT Anatomy</i>	3-22
<i>Pathology of the Pleura</i>	23-46
<i>Technique of Examination of the Chest by CT</i>	47-56
<i>CT Manifestations with Illustrative Cases</i>	57-98
<i>Summay & Conclusion</i>	99-100
<i>References</i>	101-112
<i>Arabic Summary</i>	

LIST OF FIGURES

	Page
Fig. 1 : Subdivision of the pleura	3
Fig. 2 : Relation of the right cervical pleura	3
Fig. 3 : Suprapleural membrane	5
Fig. 4 : Fissures and lobes of the lungs	7
Fig. 5 : Surface anatomy of the pleura	12
Fig. 6 : Normal fissures	14
Fig. 7 : Azygos lobe and fissure	15
Fig. 8 : Azygos lobe cancer	17
Fig. 9 : Inferior accessory fissure	17
Fig. 10 : Inferior pulmonary ligament	19
Fig. 11 : Intrafissural fat	21
Fig. 12 : Position shift of the free pleural effusions	46
Fig. 13 : Scanogram	48
Fig. 14 : CT reinformation	54
Fig. 15 : CT features of primary pleural lesions	57
Fig. 16 : Bilateral pleural effusion	59
Fig. 17 : Pleural effusion in the major fissure	59
Fig. 18 : Left pleural effusion	62
Fig. 19 : Relationship of pleural effusion and ascites to the diaphragm	62
Fig. 20 : Pleural fluid and ascites	64
Fig. 21 : Pneumothorax	66
Fig. 22 : Hydropneumothorax	68
Fig. 23 : Normal anatomy post right pneumonectomy	71
Fig. 24 : Diminutive right post-pneumonectomy space	71
Fig. 25 : Normal anatomy post left pneumonectomy	72
Fig. 26 : Recurrent bronchogenic carcinoma post left pneumonectomy	73

	Page
Fig. 27 : Empyema in the post-pneumonectomy space	75
Fig. 28 : Schematic drawing of empyema and lung abscess	77
Fig. 29a : Empyema	78
Fig. 29b : Lung abscess	78
Fig. 30 : Empyema, split-pleura sign	80
Fig. 31 : Tuberculous empyema necessitates	80
Fig. 32 : Asbestos related pleural plaques	83
Fig. 33 : Calcified pleural plaques (punctate calcification)	83
Fig. 34 : Calcified pleural plaques (linear calcification)	84
Fig. 35 : Calcified pleural plaques (irregular calcification)	84
Fig. 36 : Benign fibrous mesothelioma	86
Fig. 37 : Malignant mesothelioma	86
Fig. 38 : Pleural metastases	89
Fig. 39 : CT features of parenchymal lesions with pleural extension	91
Fig. 40 : Pleural extension from bronchogenic carcinoma	91
Fig. 41 : Superior sulcus lung cancer	93
Fig. 42 : CT features of extrapleural lesions with pleural extension	95
Fig. 43 : Pleural extension from histiocytoma of a rib.	97

Introduction & Aim of Work

INTRODUCTION & AIM OF WORK

INTRODUCTION :

CT may show abnormalities of the pleura at an earlier stage than do other imaging technique, it is also useful in the distinction of the pleural from parenchymal disease, in determining the precise location and extent of pleural diseases, and in certain instances it permits characterization of tissue density within a lesion by means of analysis of attenuation coefficients.

CT is the preferable imaging technique for the characterization of pleural masses in regard to their location (i.e. pleural or parenchymal) and their composition.

CT is more likely to determine either the characteristics or presence of an associated underlying malignant tumor.

CT is helpful in the differential diagnosis of diffuse pleural disease, particularly in differentiation of malignant from benign conditions.

CT provides information about the extent of disease and invasion of chest wall and other surrounding structures.

AIM OF WORK :

The aim of this work is to emphasize that the CT is an important diagnostic tool in studying pleural lesions.

Anatomy

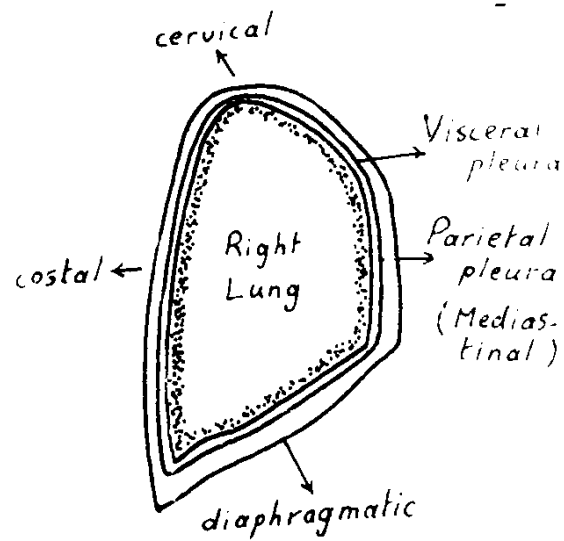


Fig. 1 : Subdivisions of the pleura
(Quoted from Amin, 1980).

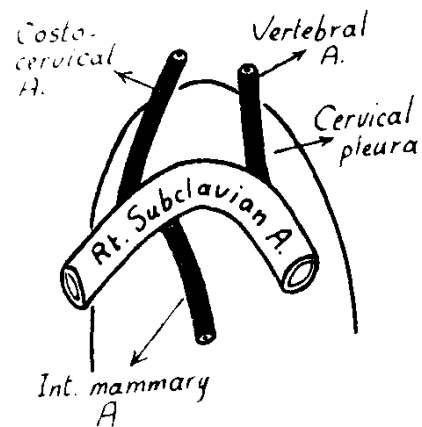


Fig. 2 : Relations of right cervical pleura
(Quoted from Amin, 1980).

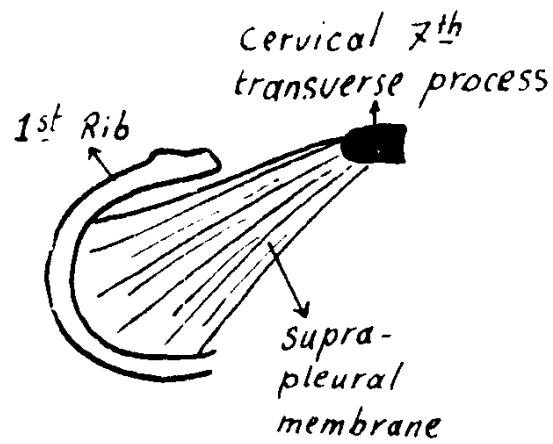


Fig. 3 : Suprapleural membrane. Fan-shaped sheath which covers the cervical pleura from the 7th cervical transverse process and spread to the inner border of the 1st rib.

(Quoted from Amin, 1980).