

ASSESSMENT OF THE MANAGEMENT OF BURNS IN THE BURN UNIT OF AIN SHAMS UNIVERSITY

Thesis Submitted for the partial fulfillment
of the Master Degree In General Surgery

BY

Ayman Ahmed Abd El-Salam
M.B.B.Ch., Ain Shams University



65752

Supervised by

Prof. Dr. Imam Fakhr

Professor Of General Surgery
Faculty Of Medicine ,Ain Shams University

617-11
A A



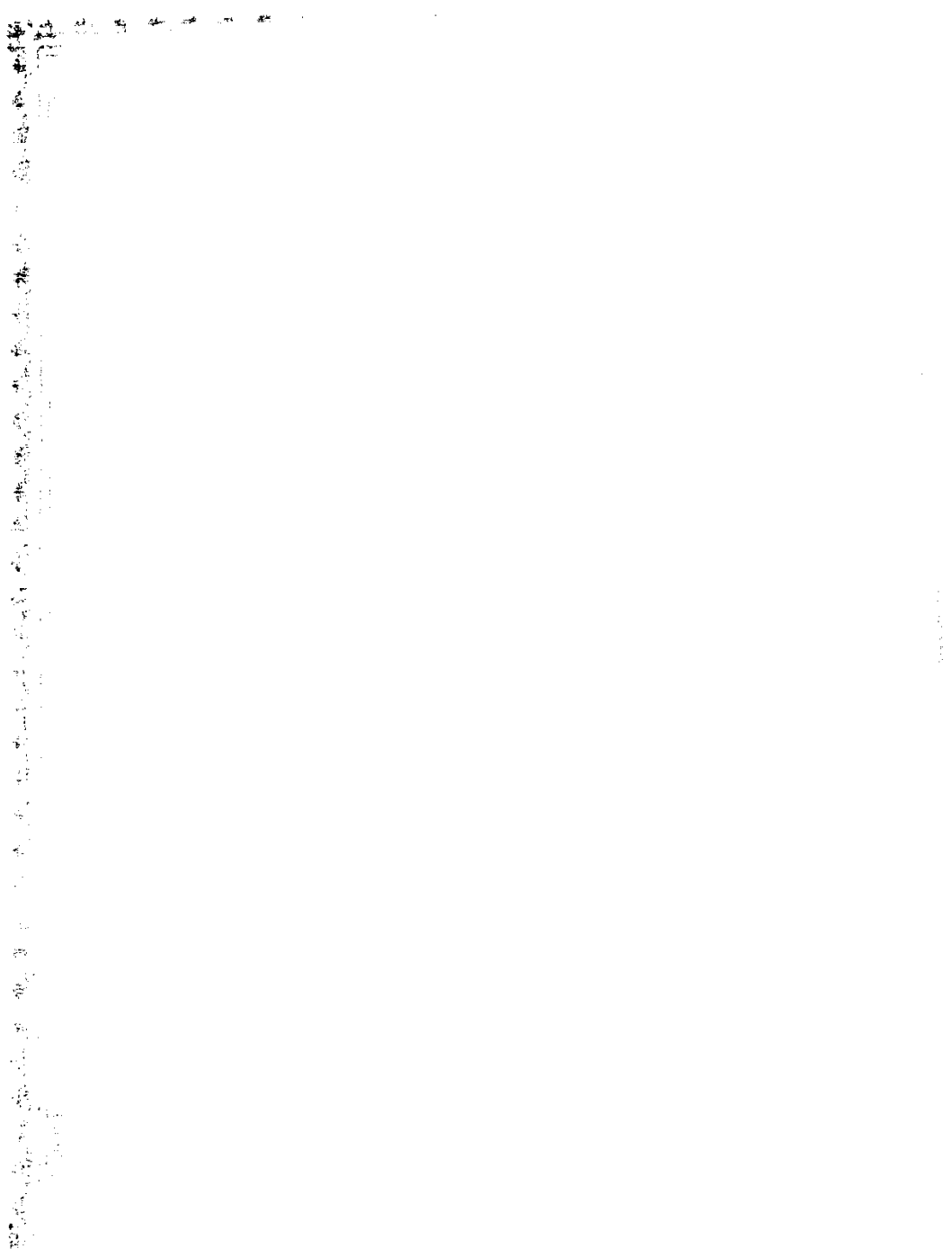
Prof. Dr. Mohamed Ashraf Abdel-Fattah

Professor Of Plastic And Reconstructive Surgery,
Faculty Of Medicine, Ain Shams University

Ass. Prof. Ayman Abu El-Makarem

Assistant Professor Of Plastic And Reconstructive Surgery,
Faculty Of Medicine, Ain Shams University

Handwritten signatures of the three individuals mentioned above: Prof. Dr. Imam Fakhr, Prof. Dr. Mohamed Ashraf Abdel-Fattah, and Ass. Prof. Ayman Abu El-Makarem.







To My Family

A Lot of Thanks to my Father

١٠٠

١٠١

١٠٢

١٠٣

١٠٤

١٠٥

١٠٦

١٠٧

١٠٨

١٠٩

١١٠

١١١

١١٢

١١٣

١١٤

ACKNOWLEDGMENT

I would like to express my deepest gratitude and appreciation to Prof. Dr. Imam Fakhr, Prof. Of Surgery, Faculty of Medicine Ain Shams University, for his kind guidance and precious help in the development and production of this work.

I am very thankful and really appreciable to Prof. Dr. Mohamed Ashraf, Prof. Of Plastic and Reconstructive Surgery, Faculty of Medicine Ain Shams University, for his guidance and sincere advice. Without his kind supervision, this work would have never seen the light.

I would like to express my deep thanks and respect to Prof. Dr. Ayman Abo El-Makarem, Ass. Prof. Of Plastic and Reconstructive Surgery, Faculty of Medicine, Ain Shams University, for his remarkable role, wise supervision and meticulous remarks. His endless efforts were the main factors for this research to be released in such an honorable way.

I would like to express my greatest appreciation and immense gratitude to Prof. Dr. Mostafa Hemeda, Prof. and head of the Department of Plastic and Reconstructive Surgery, Faculty of Medicine Ain Shams University, for his great support, continuous encouragement from the very first moment of my career.

I am deeply indebted to Prof. Dr. Mohsen Gadallah, Prof. Of Community Medicine, Faculty of Medicine Ain Shams University, who put the plan for the collection of data, taught me and gave me a lot of his valuable time and experience for the statistical analysis of the results.

Lastly, but not the least, I wish to thank my family, my colleagues and every one who had supported this work either by his effort or psychological support.

CONTENTS

CONTENTS

Introduction	1
Aim of the work	4
Review of the literature	5
Material and methods	49
Results	56
Discussion	69
English summary and conclusion	80
References	83
Arabic summary	

١٠٠

١٠١

١٠٢

١٠٣

١٠٤

١٠٥

١٠٦

١٠٧

١٠٨

١٠٩

١١٠

١١١

List of Figures :

Fig . 1: Distribution of patients according to sex and year of admission .	p. 56
Fig . 2: Causes of burns according to age groups.	p. 58
Fig . 3: Burn Location	p. 58
Fig . 4: Common sites affected by burns	p. 59
Fig . 5: Burn severity in different age groups .	p. 61
Fig . 6: Burn severity and mortality .	p. 62
Fig . 7: Mortality and length of hospitalization	p. 63
Fig . 8: Causes of death in different years	p. 64
Fig . 9: Mortality rate in different age groups	p. 65
Fig . 10: Mortality rate and sex of patients	p. 66
Fig . 11: Mortality rate and sex of patients	p. 66
Fig . 12: Management and Mortality rate	p. 68

List of Tables :

Table 1 : Distribution of patients according to sex and year of admission.	p. 57
Table 2 : Causes of burns in different age groups.	p. 57
Table 3 : Number of sites affected in dead and living patients .	p. 59
Table 4 : Incidence of pulmonary affection and airway burns and prognosis of these patients .	p. 60
Table 5 : Burn severity in different age groups .	p. 60
Table 6 : Burn severity and mortality rate	p. 61
Table 7 : Mortality in different years of admission .	p. 62
Table 8 : Mortality and length of hospitalization .	p. 63
Table 9 : causes of death in different years .	p. 64.
Table 10 : Mortality rate in different age groups .	p. 65
Table 11 : Mortality rate and sex of patients .	p. 65
Table 12 : Mortality rate and associated disease	p. 66
Table 13 : Mortality rate and different methods of management .	p. 67

