



شبكة المعلومات الجامعية

بِسْمِ اللَّهِ الرَّحْمَنِ الرَّحِيمِ



شبكة المعلومات الجامعية
@ ASUNET

جامعة عين شمس

التوثيق الالكتروني والميكرو فيلم

قسم

نقسم بالله العظيم أن المادة التي تم توثيقها وتسجيلها
على هذه الأفلام قد أعدت دون أية تغييرات



يجب أن

تحفظ هذه الأفلام بعيدا عن الغبار

في درجة حرارة من ١٥-٢٥ مئوية ورطوبة نسبية من ٢٠-٤٠%

To be Kept away from Dust in Dry Cool place of
15-25- c and relative humidity 20-40%



شبكة المعلومات الجامعية التوثيق الالكتروني والميكروفيلم

وثائق لم ترد بـلاصل

يصعب قراءة بعض الوثائق



كلية الطب

CIRCULATING INTERLEUKIN-16 IN SYSTEMIC LUPUS ERYTHEMATOSUS, CORRELATION WITH DISEASE ACTIVITY

Thesis

Submitted in partial fulfillment for the M.Sc. degree in
Internal Medicine

Presented by

Ashraf Abdaly Ismail

(M.B.;B.Ch)

Resident of Internal Medicine

Rheumatology unit, Assiut University Hospital

Supervised by

Prof. Nabawia Mahmoud Tawfik

Professor of Internal Medicine and Head of Rheumatology unit
Faculty of Medicine-Assiut University

Prof. Ahmed Kamel Mostafa

Professor of Clinical Pathology
Faculty of Medicine-Assiut University

Dr. Mahmoud Aly Mahmoud Ashry

Lecturer of Internal Medicine
Faculty of Medicine-Assiut University

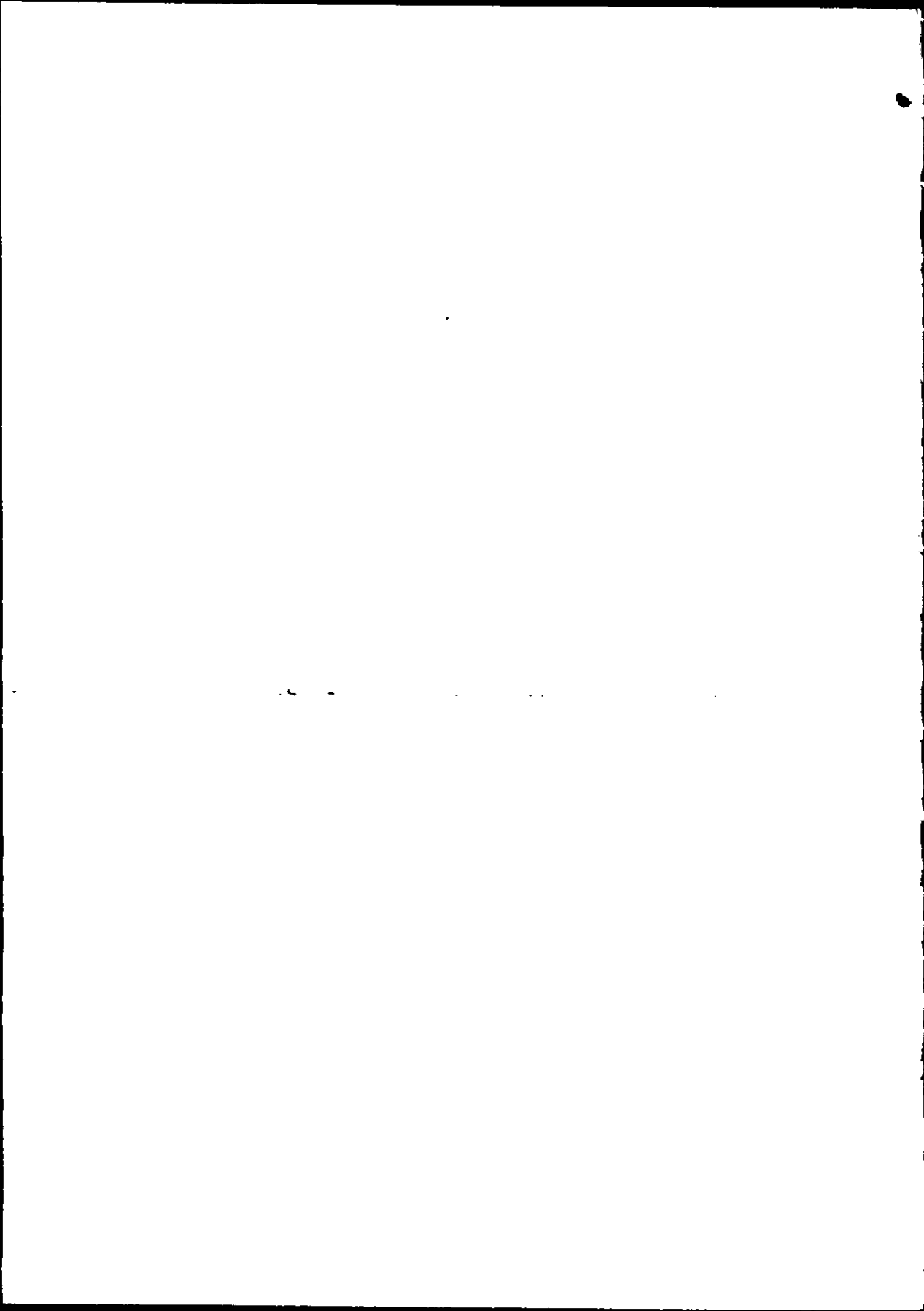
Faculty of Medicine

Assiut University

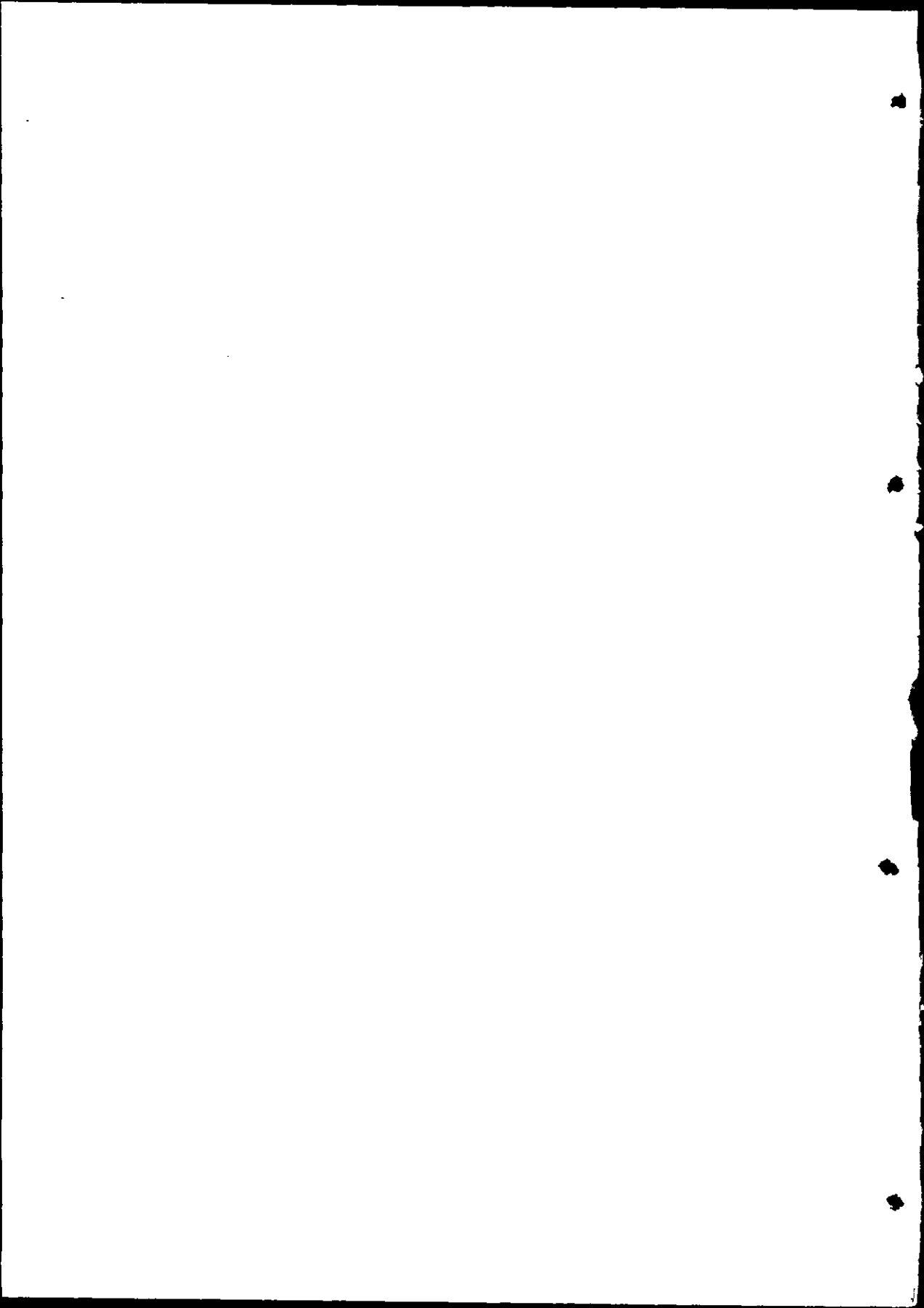
2002

7/10
1/18





TO MY FAMILY



ACKNOWLEDGMENTS



ACKNOWLEDGMENT

Praise be to Allah, the merciful, the compassionate for all the countless gifts I have been offered. Of these gifts, those persons who were assigned to give me a precious hand so as to be able to fulfill this study. Some of them will be able to fulfill this study. Some of them will be cordially acknowledged.

I am much indebted to **Prof. Nabawia Mahmoud Tawfik**, Professor of Internal Medicine, Faculty of Medicine, Assiut University for suggesting the research topic, kind supervision, generous advice, clarifying suggestions and support during the whole scope of this work. Her endless help was an excellent guide to me.

I would like to express my immense gratitude and appreciation to **Prof. Ahmed Kamel Mostafa**, Professor of Clinical Pathology, Faculty of Medicine, Assiut University, for his expert and keen supervision, kind advice and constant encouragement throughout the work .

I would like to express my immense gratitude and appreciation to **Dr. Mahmoud Aly Mahmoud Ashry**, Lecturer of Internal Medicine, Faculty of Medicine, Assiut University, for his continuous encouragement and support largely needed during the conduction of this work.

Also, I would like to express my sincere appreciation to **Prof. Madiha Mahrous Zakhari**, Professor of Biochemistry, Assiut University, Faculty of Medicine, for her kind help and indispensable advice.

My gratefulness and great appreciation are also paid to **Dr. Lubna Mohammed Tag El-Din**, Lecturer of Clinical Pathology, Faculty of

Medicine, Assiut University for her great assistance and facilities she generously offered during the practical part of the present study.

No words can be sufficient to express my gratitude and indebtedness to all staff members and my colleagues in the Internal Medicine Departments, Faculty of Medicine, Assiut University, for their valuable suggestions and fruitful cooperation .

Ashraf Abdaly