



شبكة المعلومات الجامعية

بِسْمِ اللَّهِ الرَّحْمَنِ الرَّحِيمِ





شبكة المعلومات الجامعية



# شبكة المعلومات الجامعية

## التوثيق الالكتروني والميكرو فيلم

# جامعة عين شمس

التوثيق الالكتروني والميكرو فيلم

## قسم

نقسم بالله العظيم أن المادة التي تم توثيقها وتسجيلها  
علي هذه الأفلام قد اعدت دون أية تغيرات



## يجب أن

تحفظ هذه الأفلام بعيداً عن الغبار

في درجة حرارة من 15 – 20 مئوية ورطوبة نسبية من 20-40 %

To be kept away from dust in dry cool place of  
15 – 25c and relative humidity 20-40 %



شبكة المعلومات الجامعية



# بعض الوثائق الأصلية تالفة



شبكة المعلومات الجامعية



بالرسالة صفحات  
لم ترد بالأصل

C 8

# **Argon versus Diode**

---

# **Laser Trabeculoplasty**

## **Essay**

submitted for partial fulfilment of  
The master degree in Ophthalmology

*by*

**AmaL Abd El-Moety Emam**

M.B., B.ch.;

Supervised by

**Prof.Dr. NEGM EL-DIN HELAL**

Prof. Of ophthalmology

Faculty of medicine

Ain Shams University

**Dr.SHERIF ZAKI MANSOUR**

Assist. Prof. of ophthalmology

Faculty of medicine

Ain Shams University

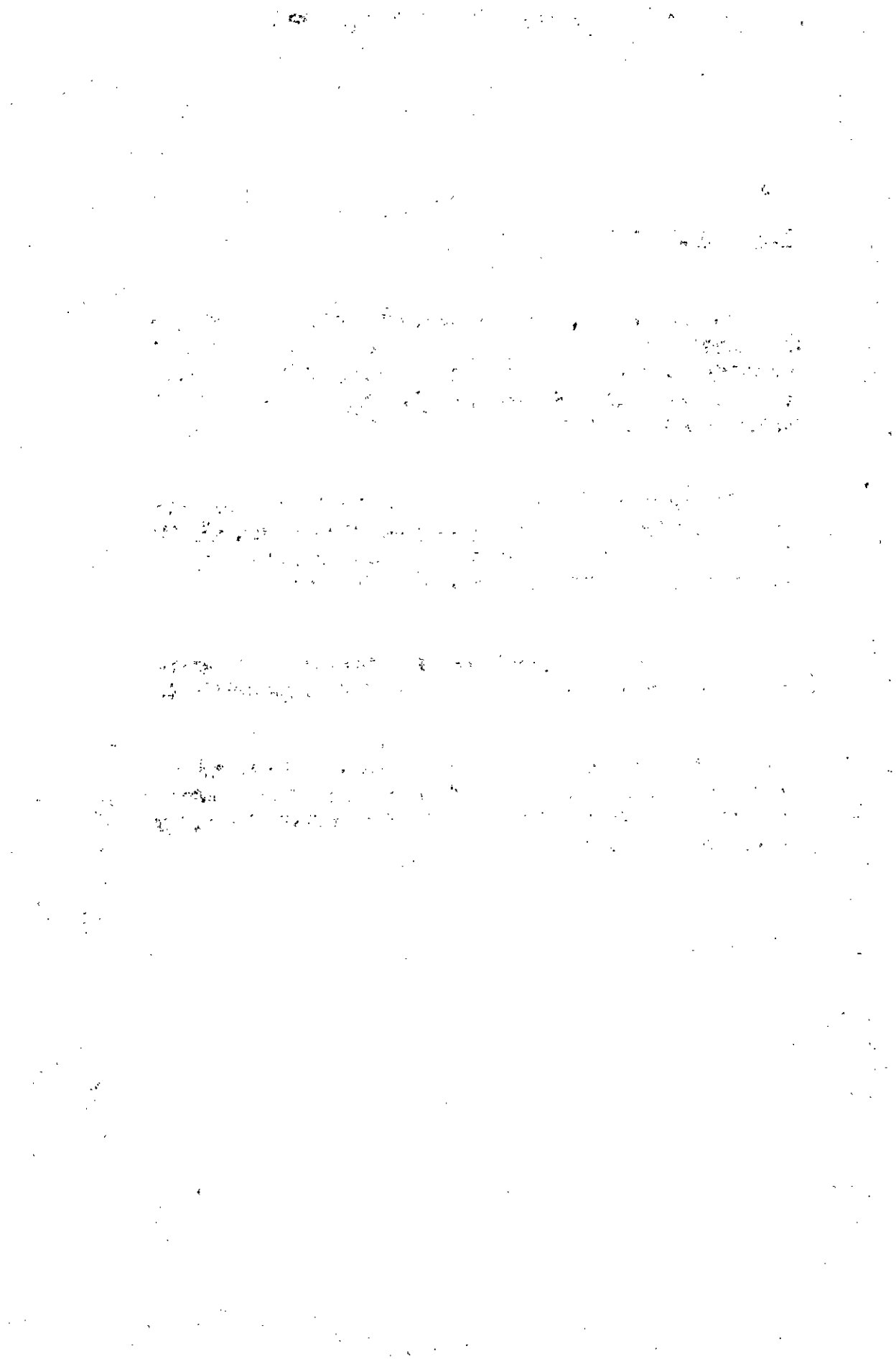
Faculty of medicine

Ain Shams University

Cairo- Egypt

2000

B 71 C A



دیت فائل ۷۷۹۴۹۷۲  
۱۰/۱۹۰۷۲

۷۷۹۴۹۷۲  
۱۰/۲۴۸۷۴۷

### Acknoldgement

I would like to express my deepest gratitude to Professor Dr. Negm El-Din Helal Professor of ophthalmology Ain shams university for giving me the honor of supervising this work, which could not have been accomplished without his generous guidance, flexibility and insight.

My sincerest gratitude to Dr. Sherif Zaki Mansour Assistant Professor of ophthalmology Ain shams university for his expert assistance, fruitful criticism, and valuable step by step remarks that were vital to accomplish this work.

I would like to extend my compliments to my supervisors whose genourisity and suprem hospitality need a special thank.

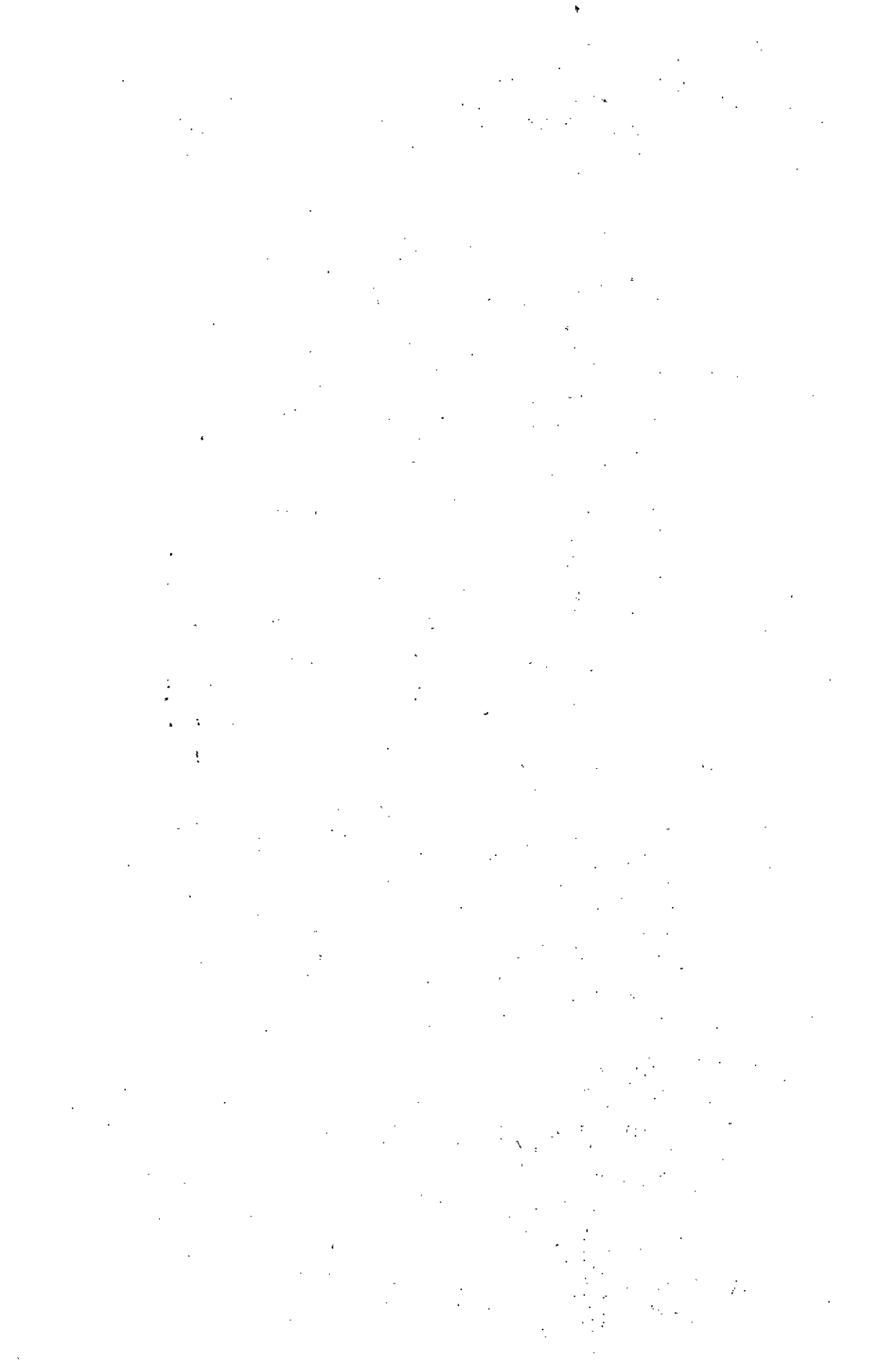
A debt of gratitude should be owed to the scientists, designers and manufactures of laser equipments whose commitments to their profession made such a difference in the lives of so many patients.





# **List of contents**

	page
Chapter (I): Introduction	(1)
Chapter (II): Basic information about laser	
History of lasers	(3)
General principle of laser	(6)
Laser tissue interaction	(12)
Laser system parts	(15)
Argon laser	(20)
Diode laser	(23)
Chapter(III): Anatomy of the anterior chamber & its angle	(28)
Last roll of iris	(30)
Ciliary band	(30)
Iris process	(30)
Scleral spur	(31)
Trabecular meshwork	(33)
Uveal meshwork	(34)
Corneoscleral meshwork	(36)
Juxta-canalicular meshwork	(37)
Schwalbe's ring	(38)
Schlemm's canal	(39)
Collector channels	(44)
Chapter(IV): Gonioscopy	
Direct gonioscopy	(46)
Indirect gonioscopy	(48)



Approach to gonioscopy	(54)
Gonioscopic angle appearance	(56)
Grading of angle width	(58)
Shaffer grading system	(59)
Scheie system	(61)
Spaeth system	(61)
Van herick method	(63)

#### Chapter(V): Argon laser trabeculoplasty

History of trabeculoplasty	(65)
Mechanism of action	(69)
Indications of LTP	(72)
Contraindications to LTP	(76)
preoperative preparation	(76)
Operative technique	(78)
Postoperative management	(84)
Advantages of trabeculoplasty	(85)
Disadvantages of trabeculoplasty	(86)
Results of trabeculoplasty	(87)
Factors affecting outcome of LTP	(87)
Complications of LTP	(93)

#### Chapter(VI): Diode laser trabeculoplasty (105)

#### Chapter(VII): Comparison between Argon & diode LTP (109)

#### Chapter(VIII): Summary (116)

#### Chapter(IX): References (118)

#### Chapter(X): Arabic summary - - -



## LIST OF FIGURES

	Page
Fig. (2-1): Fluorescence	6
Fig. (2-2): Stimulated light emission	7
Fig. (2-3): Typical laser cavity	9
Fig. (2-4): Modes of operation of laser	11
Fig. (2-5): Absorption of laser energy in tissue	13
Fig. (2-6): Thermal zones after laser impact	13
Fig. (2-7): Laser system parts	19
Fig. (2-8): Mechanism of stimulated light emission in the p-n junction of semiconductor diode laser	26
Fig. (2-9): Schematic diagram of the internal structure of a buried hetero structure GaAs diode laser	27
Fig. (3-1): Semidiagrammatic representation of the structures of the angle of the anterior chamber	28
Fig. (3-2): Schematic view of different layers of the outflow system	29
Fig. (3-3a): Varying profiles of iris processes	32
Fig. (3-3b): Meridional section of the scleral Spur	32
Fig. (3-4): Scanning electron microgram of the trabecular meshwork	33
Fig. (3-5): Flat preparation of the trabecular meshwork showing the attachment of some uveal trabeculae with a prominent line of schwalbe	35

