



شبكة المعلومات الجامعية

بِسْمِ اللَّهِ الرَّحْمَنِ الرَّحِيمِ





شبكة المعلومات الجامعية



شبكة المعلومات الجامعية

التوثيق الالكتروني والميكروفيلم



شبكة المعلومات الجامعية

جامعة عين شمس

التوثيق الالكتروني والميكروفيلم

قسم

نقسم بالله العظيم أن المادة التي تم توثيقها وتسجيلها
علي هذه الأفلام قد اعدت دون أية تغيرات



يجب أن

تحفظ هذه الأفلام بعيداً عن الغبار

في درجة حرارة من 15 – 20 مئوية ورطوبة نسبية من 20-40 %

To be kept away from dust in dry cool place of
15 – 25c and relative humidity 20-40 %



شبكة المعلومات الجامعية



بعض الوثائق الأصلية تالفة



شبكة المعلومات الجامعية



بالرسالة صفحات

لم ترد بالأصل

**ANALYZING THE BLUETOOTH PERFORMANCE
FOR DIFFERENT LINK TYPES CONFIGURATIONS**
by

Eng. Hossam Mohamed Sabry Atwa El-Morsy

**A Thesis Submitted to the
Faculty of Engineering at Cairo University
In Partial Fulfillment of the
Requirements for the Degree of
MASTER OF SCIENCE
in
COMPUTER ENGINEERING**

Under the Supervision of

**Prof. Dr. Hoda Anis Baraka
Computer Engineering
Cairo University**

Hoda Baraka

**Dr. Hussein Sherif Eissa
Electronics Research Institute**

Hussein Eissa

**FACULTY OF ENGINEERING, CAIRO UNIVERSITY
GIZA, EGYPT
August 2006**

*B
1249*

1/20/20

1/20/20

**ANALYZING THE BLUETOOTH PERFORMANCE
FOR DIFFERENT LINK TYPES CONFIGURATIONS**

by

Eng. Hossam Mohamed Sabry Atwa El-Morsy

**A Thesis Submitted to the
Faculty of Engineering at Cairo University
In Partial Fulfillment of the
Requirements for the Degree of
MASTER OF SCIENCE
in
COMPUTER ENGINEERING**

**Approved by the
Examining Committee**

Prof. Dr. Hoda Anis Baraka

Main Advisor *Hoda Baraka*

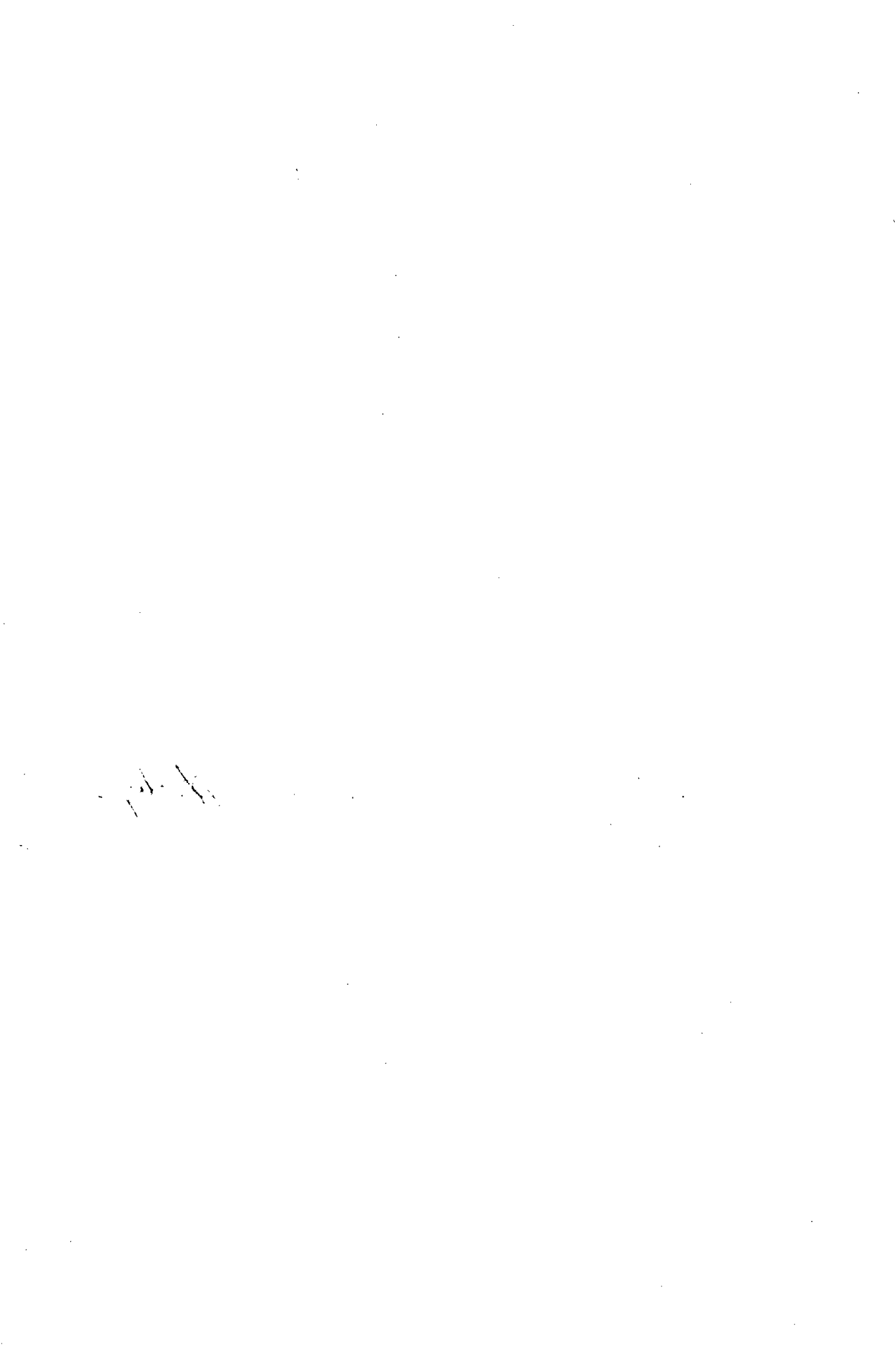
Prof. Dr. Mohamed Saad El-Sherif

Member *El-Sherif*

Prof. Dr. Samia Abd El-Razek Mashali

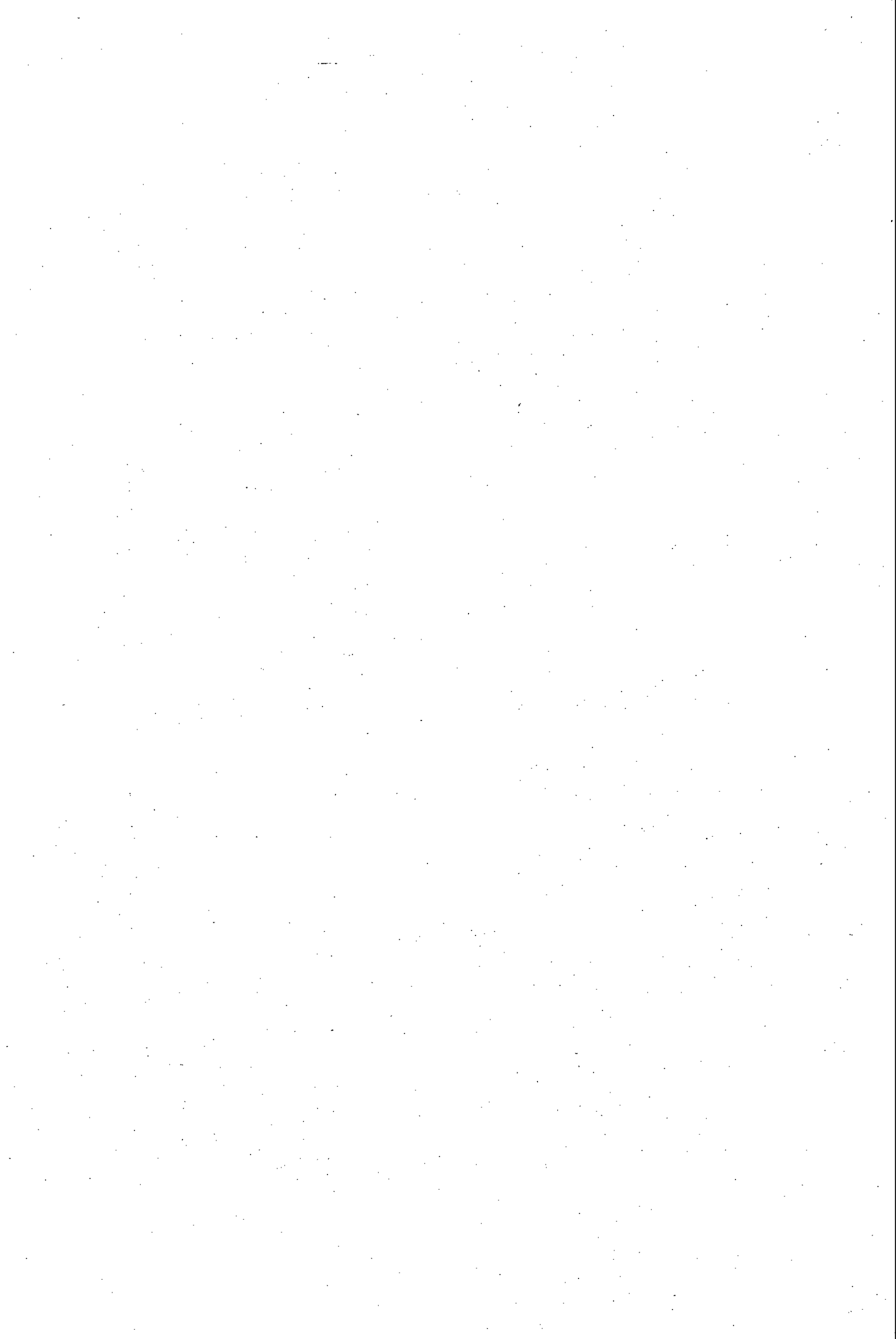
Member *Samia Mashali*

**FACULTY OF ENGINEERING, CAIRO UNIVERSITY
GIZA, EGYPT
August 2006**



CONTENTS

	Page
LIST OF TABLES	ii
LIST OF FIGURES	iv
LIST OF SYMBOLS AND APPREVIATIONS	vii
ACKNOWLEDGEMENT	ix
ABSTRACT	x
1- INTRODUCTION	2
2- BLUETOOTH TECHNOLOGY OVERVIEW	7
2.1 Introduction	7
2.2 Bluetooth Connection Link Types	8
2.3 Piconet and Scatternet	13
2.4 Bluetooth Protocol	15
2.5 Bluetooth Connectivity	19
2.6 Scatternet algorithms	21
2.7 IP over Bluetooth	23
2.8 Real Time Application over Bluetooth	29
2.9 Header Compression	30
2.10 Summary	33
3- PROPOSED BLUETOOTH CONFIGURATIONS AND TOPOLOGIES	35
3.1 Introduction	35
3.2 Bluetooth Configurations	35
3.3 Link Bandwidth Utilization	43
3.4 Bluetooth Topologies	46
3.5 Packet Format	47
3.6 Summary	48
4- BLUETOOTH CONFIGURATIONS PERFORMANCE ANALYSIS	51
4.1 Introduction	51
4.2 Bluetooth performance analysis	52
4.3 Bandwidth Utilization Parameter	52
4.4 Packet Overhead Parameter	58
4.5 Link Switching Overhead Parameter	64
4.6 Link Data Rate Parameter	70
4.7 Robustness Parameter	75
4.8 Packet Delay Parameter	79
4.9 Summary	87
5- CONCLUSION & Future Work	93
6- REFERENCES	98
7- APPENDIX A	102
8- APPENDIX B	106



LIST OF TABLES

	Page
Table (2.1) SCO/HV1, HV2 and HV3 packet types	10
Table (2.2) Data Rates Achievable on Bluetooth ACL links	12
Table (3.1) Total Bandwidth Utilization of pure SCO configurations	36
Table (3.2) Total Bandwidth Utilization of SCO and ACL Combinations Configurations	38
Table (3.3) Total Bandwidth Utilization of pure ACL configurations	42
Table (3.4) Link Bandwidth Utilization of SCO-HV2 type configurations	43
Table (3.5) Link Bandwidth Utilization of SCO-HV3 type configurations	44
Table (3.6) Link Bandwidth Utilization Pure ACL configurations	45
Table (4.1) Configurations' Bandwidth Utilization versus SCO & ACL Types	57
Table (4.2) Packet payload and Packet overhead Percentage	59
Table (4.3) Packet overhead Percentage	63
Table (4.4) Link Switching Overhead %	65
Table (4.5) Link Switching Overhead %	69
Table (4.6.a) Configurations' Data Rate sorted of SCO Link Type	71
Table (4.6.b) Configurations' Data Rate sorted of ACL Link Type	72
Table (4.7.a) Configurations' Data Rate sorted of SCO-HV2 Link Type	73
Table (4.7.b) Configurations' Data Rate sorted of SCO-HV3 Link Type	74
Table (4.7.c) Configurations' Data Rate sorted of ACL Link Type	74
Table (4.8) Configurations' Robustness based on the Topologies	76
Table (4.9) Average No. of Slots per Configuration	78
Table (4.10) SCO Link Delay	80
Table (4.11) DM1 Link Delay	80
Table (4.12) DH1 Link Delay	81
Table (4.13) DM3 Link Delay	81
Table (4.14) DH3 Link Delay	82
Table (4.15) DM5 Link Delay	82
Table (4.16) DH5 Link Delay	82

Table (4.17)	Audio Sessions per Configurations based on the Topologies	84
Table (4.18)	Audio Sessions per Configurations	86
Table(5.1)	Summary of the Bluetooth performance analysis of mode 1	95
Table(5.2)	Summary of the Bluetooth performance analysis of mode 2	96
Table(5.3)	Most high quality codes Configurations of mode 1	96
Table (A.1)	Configurations' Bandwidth Utilization versus Topology No.	102
Table (A.2)	Configurations' Packet overhead Percentage	103
Table (A.3)	Configurations' Link Switching Overhead Percentage	104

LIST OF FIGURES

		Page
Fig. (2.1)	SCO link reservation	10
Fig. (2.2)	TDD Operation with Frequency Hopping	13
Fig. (2.3)	Bluetooth Packet format	13
Fig. (2.4) (a)	Bluetooth Piconet	13
Fig. (2.4) (b)	Bluetooth Scatternet	13
Fig. (2.5)	Time division duplex access scheme	14
Fig. (2.6)	Bluetooth protocol stack	15
Fig. (2.7)	Bluetooth Connection States	21
Fig. (2.8)	Method 1: The Bluetooth specification	24
Fig. (2.9)	Method 2: IP over L2CAP	24
Fig. (2.10)	Method 3: The BNEP way	25
Fig. (2.11)	Roaming between PANs	27
Fig. (2.12)	BLUEPAC reference network with functional elements	28
Fig. (2.13)	VoIP packet	30
Fig. (2.14)	General scheme of header compression	30
Fig. (2.15)	Schematic view of ROCCO header compression and decompression	31
Fig (3.1)	Pure SCO Total Bandwidth versus Bandwidth Utilization	36
Fig. (3.2)	HV1/1 Configuration	37
Fig. (3.3)	HV2/1 Configuration	37
Fig. (3.4)	HV3/1 Configuration	37
Fig. (3.5)	SCO & ACL Combinations Total Bandwidth versus Bandwidth Utilization	38
Fig. (3.6)	HV2/2 Configuration	39
Fig. (3.7)	HV2/3 Configuration	39
Fig. (3.8)	HV3/2 Configuration	39

Fig. (3.9)	HV3/3 Configuration	40
Fig. (3.10)	HV3/4 Configuration	40
Fig. (3.11)	HV3/5 Configuration	40
Fig. (3.12)	HV3/6 Configuration	40
Fig. (3.13)	HV3/7 Configuration	41
Fig. (3.14)	HV3/8 Configuration	41
Fig (3.15)	Pure ACL Total Bandwidth versus Bandwidth Utilization	42
Fig (3.16)	Standard packet format	47
Fig (3.17)	Payload header format for single-slot packets	47
Fig (3.18)	Payload header format for multi-slot packets	47
Fig. (4.1.a)	Configurations' Bandwidth Utilization of Topology 2	53
Fig. (4.1.b)	Configurations' Bandwidth Utilization of Topology 3	53
Fig. (4.1.c)	Configurations' Bandwidth Utilization of Topology 4	54
Fig. (4.1.d)	Configurations' Bandwidth Utilization of Topology 5	54
Fig. (4.1.e)	Configurations' Bandwidth Utilization of Topology 6	54
Fig. (4.1.f)	Configurations' Bandwidth Utilization of Topology 7	55
Fig. (4.2)	Configurations' Bandwidth Utilization versus SCO & ACL Types	58
Fig. (4.3.a)	Configurations' Packet overhead percentage of Topology 2	60
Fig. (4.3.b)	Configurations' Packet overhead percentage of Topology 3	60
Fig. (4.3.c)	Configurations' Packet overhead percentage of Topology 4	61
Fig. (4.3.d)	Configurations' Packet overhead percentage of Topology 5	61
Fig. (4.3.e)	Configurations' Packet overhead percentage of Topology 6	61
Fig. (4.3.f)	Configurations' Packet overhead percentage of Topology 7	62
Fig. (4.4)	Configurations' Packet overhead Percentage Curve	64
Fig. (4.5)	Three-slot and five-slot long packets reduce overhead compared to one-slot packets.	65
Fig. (4.6.a)	Configurations' Link Switching overhead % of Topology 2	66
Fig. (4.6.b)	Configurations' Link Switching overhead % of Topology 3	66
Fig. (4.6.c)	Configurations' Link Switching overhead % of Topology 4	66
Fig. (4.6.d)	Configurations' Link Switching overhead % of Topology 5	67
Fig. (4.6.e)	Configurations' Link Switching overhead % of Topology 6	67