



شبكة المعلومات الجامعية

بِسْمِ اللَّهِ الرَّحْمَنِ الرَّحِيمِ





شبكة المعلومات الجامعية



شبكة المعلومات الجامعية

التوثيق الالكتروني والميكرو فيلم



شبكة المعلومات الجامعية

جامعة عين شمس

التوثيق الالكتروني والميكرو فيلم

قسم

نقسم بالله العظيم أن المادة التي تم توثيقها وتسجيلها
على هذه الأفلام قد اعدت دون أية تغيرات



يجب أن

تحفظ هذه الأفلام بعيداً عن الغبار

في درجة حرارة من 15 – 20 مئوية ورطوبة نسبية من 20-40 %

To be kept away from dust in dry cool place of
15 – 25c and relative humidity 20-40 %



شبكة المعلومات الجامعية



بعض الوثائق الأصلية تالفة



شبكة المعلومات الجامعية



بالرسالة صفحات

لم ترد بالأصل

Sonographic Evaluation of Malignant Breast Lesions

Essay

Submitted for Partial Fulfillment of the M.Sc.
Degree in Radiodiagnosis

By

Nagwa Metwally Mostafa Diab
M.B., B.Ch

Supervised By

Professor Dr. Rashad Hassan Hamdi
Professor of Radiodiagnosis
Faculty of Medicine
Cairo University

Dr. Rasha Mohamed Kamal El-Din
Lecturer of Radiodiagnosis
Faculty of Medicine
Cairo University

Faculty of Medicine
Cairo University
2001

محضر

اجتماع لجنة الحكم علي الرسالة المقدمة من الطيبة/ نجوى متولي مصطفى دياب

توطئة للحصول علي درجة الماجستير في الأشعة التشخيصية

تحت عنوان : باللغة الإنجليزية :-

Sonographic Evaluation of Malignant Breast Lesions

: باللغة العربية :-

تقييم الفحص بالموجات الصوتية في تشخيص أمراض الثدي الخبيثة

بناء علي موافقة الجامعة بتاريخ: ٢٣/٣/٢٠١١ تم تشكيل لجنة الفحص و المناقشة

للمرسالة المذكورة أعلاه علي النحو التالي :-

(١) الأستاذ الدكتور/ رشاد حسن حمدي أستاذ الأشعة التشخيصية عن المشرفين

(٢) الأستاذة الدكتورة/ درية صالح سالم أستاذة الأشعة التشخيصية ممتحن داخلي

(٣) الأستاذ الدكتور/ محمد امين أستاذ الجراحة بطب بنها ممتحن خارجي

بعد فحص الرسالة بواسطة كل عضو منفردا و كتابة تقارير منفردة لكل منهم انعقدت

اللجنة مجتمعة في يوم الثلاثاء بتاريخ ١٠/٤/٢٠١١ بقسم الأشعة قاعة المحاضرات

بكلية الطب - جامعة القاهرة و ذلك لمناقشة الطالب في جلسة علنية في موضوع الرسالة و

النتائج التي توصل اليها و كذلك الأسس العلمية التي قام عليها البحث .

قرار اللجنة:

قبلت الرسالة شكلاً ومضموناً

توقيعات أعضاء اللجنة :-

أ.د / محمد امين

أ.د / درية صالح سالم

أ.د / رشاد حسن حمدي







AMERICAN MEDICAL ASSOCIATION

PUBLISHED WEEKLY

CHICAGO, ILL., U.S.A.

VOLUME 100

NUMBER 1

JANUARY 1915

Published by the American Medical Association, 535 North Dearborn Street, Chicago, Ill.

Subscription price, \$5.00 per annum in advance.

Entered as Second-Class Matter, June 26, 1891, Post Office at Chicago, Ill., under No. 383,910.

Acceptance for mailing at special rate of postage provided for in Act of October 3, 1917, authorized on July 16, 1918.

Postage paid at Chicago, Ill.

ABSTRACT

In recent years our knowledge of breast cancer has progressed rapidly resulting in new approaches and techniques, the main goal of the clinician is to differentiate between benign and malignant masses.

Still nowadays the commonest investigation is mammography but due to difficulties in interpretation of mammogram as in delineation of the lesion margin or the size of the tumor when arising in dense breast (special for women ages from 25-35 years) with hazards of ionizing radiation to these categories young females. So additional modality ultrasonography can play an important role in the detection of a variety of breast lesions especially in young females, pregnant and lactating patients or those with dense breasts.

Improvements of ultrasound equipment have prompted more recent studies with findings that describe reliable signs for differentiating benign from malignant masses. Spiculation, angular margins, marked hypoechogenicity, shadowing and calcifications are sure signs of malignancy. Marked hypoechogenicity, gentle lobulation, ellipsoid shape and echogenic thin pseudo-capsule are characters of benign lesions.

Combined mammographic ultrasound reading offers the highest diagnostic performance and consequently the most confident diagnosis in patients with mammographically non-calcified breast tumors.

Key Words:

Role of sonographic examination of the breast, Sonographic characteristics, Benign and malignant features, Indication of biopsy

1. The first part of the document is a letter from the President of the United States to the Congress, dated January 3, 1862. It is a very important document, as it contains the President's views on the state of the Union and the progress of the war.

2. The second part of the document is a report from the Secretary of the War Department, dated January 10, 1862. It contains a detailed account of the military operations of the Army during the year 1861.

3. The third part of the document is a report from the Secretary of the Navy Department, dated January 10, 1862. It contains a detailed account of the naval operations of the Navy during the year 1861.

4. The fourth part of the document is a report from the Secretary of the Department of the Interior, dated January 10, 1862. It contains a detailed account of the operations of the Department during the year 1861.

5. The fifth part of the document is a report from the Secretary of the Department of the Treasury, dated January 10, 1862. It contains a detailed account of the operations of the Department during the year 1861.

6. The sixth part of the document is a report from the Secretary of the Department of the State, dated January 10, 1862. It contains a detailed account of the operations of the Department during the year 1861.

7. The seventh part of the document is a report from the Secretary of the Department of the War, dated January 10, 1862. It contains a detailed account of the operations of the Department during the year 1861.

8. The eighth part of the document is a report from the Secretary of the Department of the Navy, dated January 10, 1862. It contains a detailed account of the operations of the Department during the year 1861.

9. The ninth part of the document is a report from the Secretary of the Department of the Interior, dated January 10, 1862. It contains a detailed account of the operations of the Department during the year 1861.

10. The tenth part of the document is a report from the Secretary of the Department of the Treasury, dated January 10, 1862. It contains a detailed account of the operations of the Department during the year 1861.

11. The eleventh part of the document is a report from the Secretary of the Department of the State, dated January 10, 1862. It contains a detailed account of the operations of the Department during the year 1861.

12. The twelfth part of the document is a report from the Secretary of the Department of the War, dated January 10, 1862. It contains a detailed account of the operations of the Department during the year 1861.

13. The thirteenth part of the document is a report from the Secretary of the Department of the Navy, dated January 10, 1862. It contains a detailed account of the operations of the Department during the year 1861.

14. The fourteenth part of the document is a report from the Secretary of the Department of the Interior, dated January 10, 1862. It contains a detailed account of the operations of the Department during the year 1861.

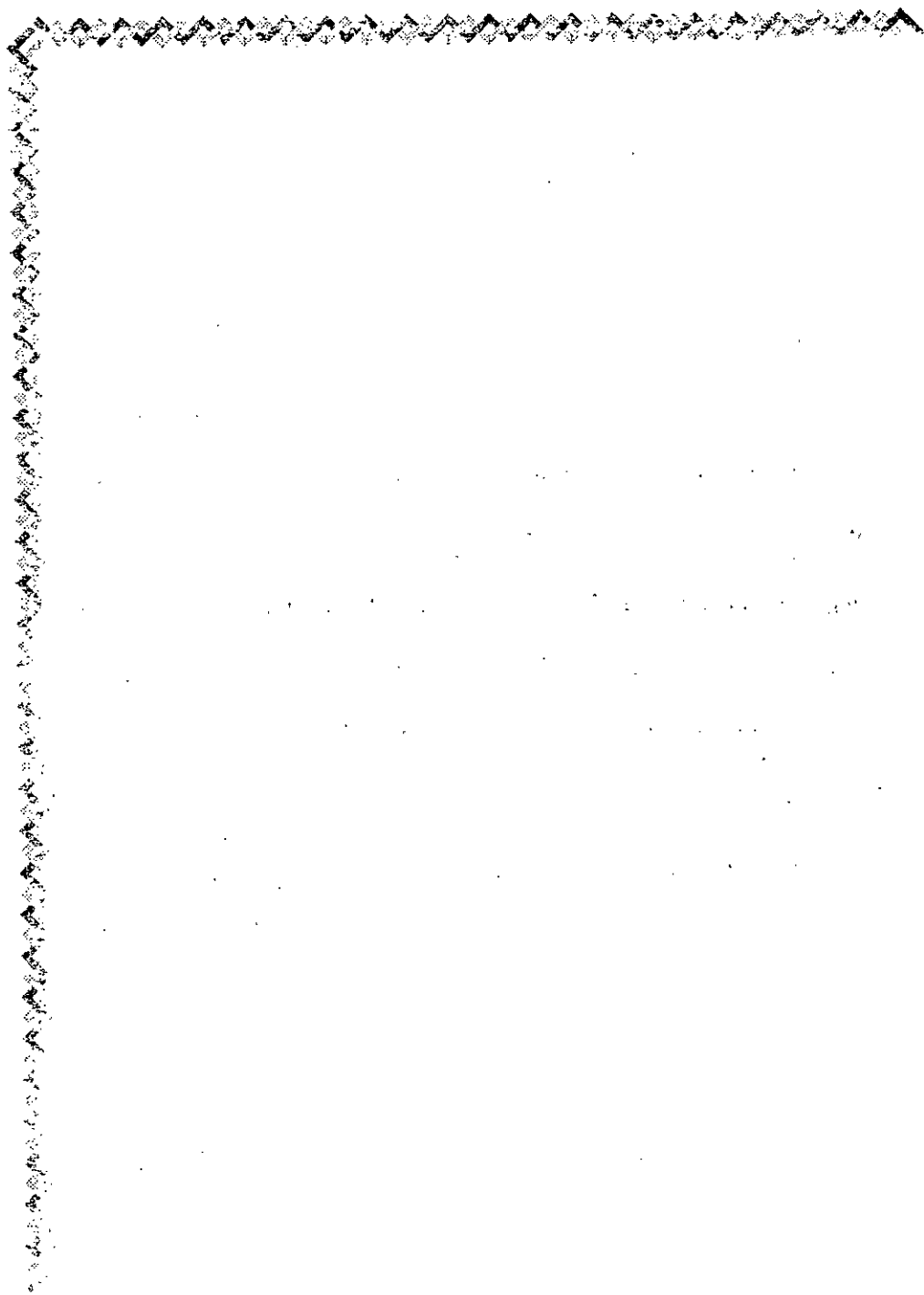
ACKNOWLEDGMENT

First of all, my prayerful gratitude should be submitted to God, the most gracious, most merciful whose help I always seek, while I try humbly to lead on his path, and without his willing I will achieve nothing.

I would like to express my deep thanks and sincere to Professor Doctor RASHAD HAMDI, Professor of Radiodiagnosis, Faculty of Medicine, Cairo University for granting me the privilege of working under his supervision, and for his generous advice and support.

I also wish to express my cordial thanks and appreciation to Dr. RASHA KAMAL EL DIN, Lecturer of Radiodiagnosis, Faculty of Medicine, Cairo University for her remarkable effort, kind help and great support throughout this work.

I would also like to thank my family who had the patience to help me in whatever way they could.



Contents

Introduction and Aim of Work.....	1
Review of Literature	
Anatomy.....	3
Pathology and Clinical Presentation.....	10
Technique of Sonomammography.....	28
Diagnostic Features of Mammary Gland on Ultrasound.....	35
Sonographic Features of Benign Breast Lesions.....	46
Sonographic Features of Malignant Breast Lesions.....	66
Discussion.....	85
Summary & Conclusion.....	100
References.....	102
Arabic Summary	

THE UNIVERSITY OF CHICAGO

THE UNIVERSITY OF CHICAGO

THE UNIVERSITY OF CHICAGO

THE UNIVERSITY OF CHICAGO

THE UNIVERSITY OF CHICAGO

THE UNIVERSITY OF CHICAGO

THE UNIVERSITY OF CHICAGO

THE UNIVERSITY OF CHICAGO

THE UNIVERSITY OF CHICAGO

THE UNIVERSITY OF CHICAGO

THE UNIVERSITY OF CHICAGO

THE UNIVERSITY OF CHICAGO

THE UNIVERSITY OF CHICAGO

THE UNIVERSITY OF CHICAGO

THE UNIVERSITY OF CHICAGO

THE UNIVERSITY OF CHICAGO

List of Diagrams

(Diag. 1) Schematic representation of the basic anatomy of the breast.	2
(Diag. 2) Schematic of a cross section of a duct.....	4
(Diag. 3) Intralobular portion of the terminal duct.....	5
(Diag. 4) Arterial supply of the breast.....	6
(Diag. 5) Development of breast cancer.....	22
(Diag. 6) Cancers found at the periphery of the parenchyma.....	23
(Diag. 7) Dynamic test.....	31
(Diag. 8) Mass shape.....	35
(Diag. 9) Mass margin.....	36
(Diag. 10) Length to anteroposterior diameter ratio.....	37