



شبكة المعلومات الجامعية

بِسْمِ اللَّهِ الرَّحْمَنِ الرَّحِيمِ





شبكة المعلومات الجامعية



شبكة المعلومات الجامعية

التوثيق الالكتروني والميكرو فيلم

جامعة عين شمس

التوثيق الالكتروني والميكرو فيلم

قسم

نقسم بالله العظيم أن المادة التي تم توثيقها وتسجيلها
علي هذه الأفلام قد اعدت دون أية تغيرات



يجب أن

تحفظ هذه الأفلام بعيداً عن الغبار

في درجة حرارة من 15 – 20 مئوية ورطوبة نسبية من 20-40 %

To be kept away from dust in dry cool place of
15 – 25c and relative humidity 20-40 %



شبكة المعلومات الجامعية



بعض الوثائق الأصلية تالفة



شبكة المعلومات الجامعية



بالرسالة صفحات
لم ترد بالأصل

Assessment of Nurses' Knowledge, Attitude and Practice Toward Aggressive Behavior in Psychiatric Hospitals

Submitted in partial fulfillment for
M.Sc. Degree in
Psychiatric Nursing

By

Amel Ahmed Mohamed

B. Sc., Nursing,
Demonstrator in High Institute of Nursing,
Ain Shams University

Supervised by
Prof. Dr.

Zeinab Loutfi

Professor & Head of Psychiatric Nursing Department
Dean of High Institute of Nursing
Ain Shams University

Dr.

Safeya Effat

Assist. Professor of Psychiatry
Faculty of Medicine
Ain Shams University

Dr.

Afaf Mohamed Fahmy

Lecturer of Psychiatric Nursing
High Institute of Nursing
Ain Shams University

[Signature]
[Signature]
High Institute of Nursing
Ain Shams University
1998

B
[Signature]



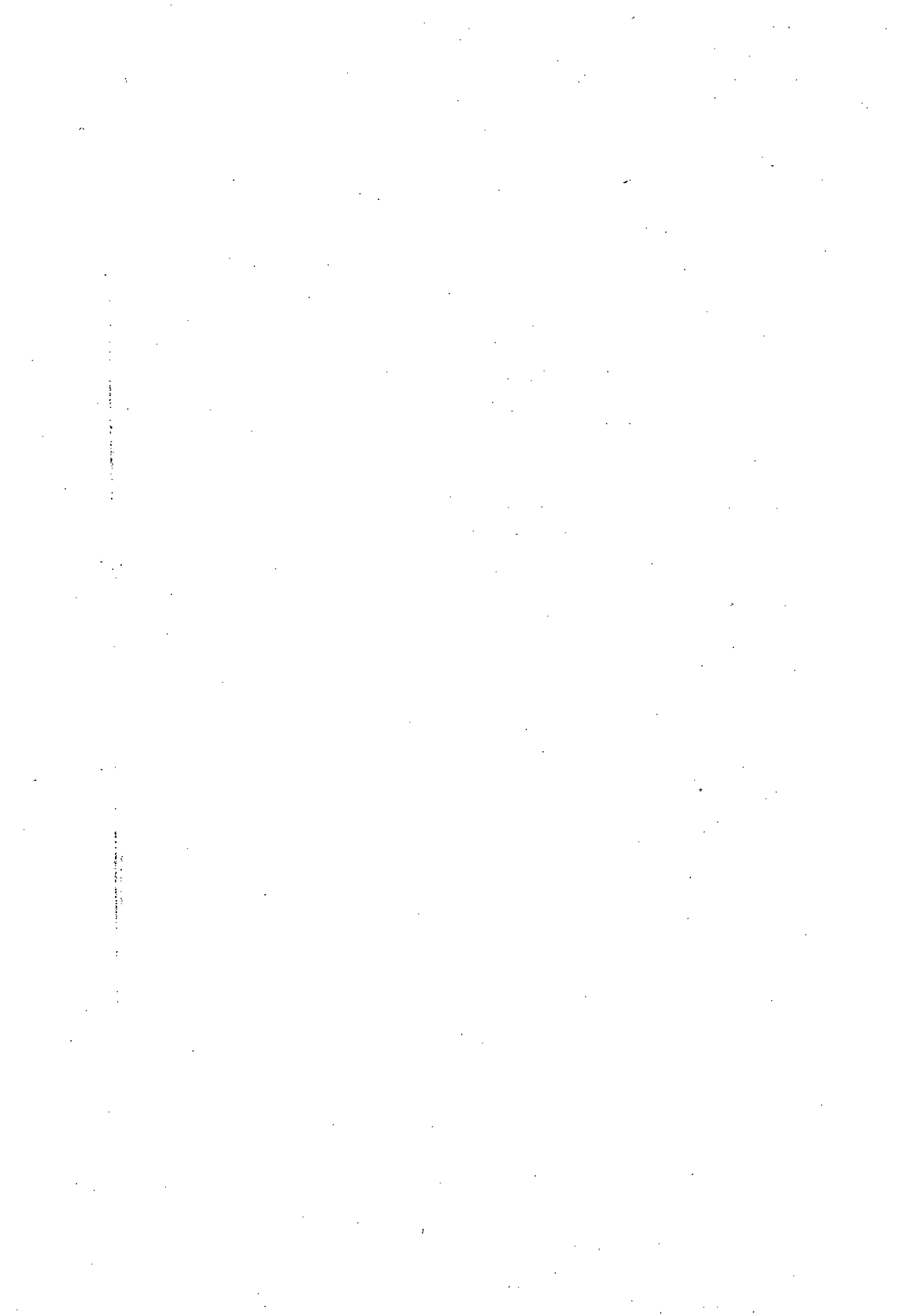
لَا إِلَهَ إِلَّا اللَّهُ

قَالُوا

سُبْحَنَكَ لَا عِلْمَ لَنَا إِلَّا بِمَا عَلَّمْتَنَا
إِنَّا أَنْتَ الْعَلِيمُ الْحَكِيمُ

صَدَقَ اللَّهُ الْعَلِيمُ

الآيَةُ (٢٢) سُورَةُ الْبَقَرَةِ



Acknowledgement

First, and foremost, I feel always indebted to **GOD**, the most kind and the most merciful.

I would like to express my deepest gratitude and respect to **Prof. Dr Zeinab Loutfy**, Professor of Psychiatric Nursing Department, and Dean of the High Institute of Nursing, Ain-Shams University, for her motherly care, constructive criticism and continuous encouragement throughout the whole work. It was by her continuous guidance that this work has come to light.

I want to express, also, my deep gratitude to **Dr. Safeya Effat**, Assist. Professor of Psychiatry, Faculty of Medicine, Ain-Shams University, for her great help during the supervision of this work.

I would like also to express my profound thanks to **Dr. Afaf Fahmy**, Lecturer of Psychiatric Nursing Department, High Institute of Nursing, Ain-Shams University, for her friendly attitude and kind supervision in conveying her experience to complete this work.

Amel Ahmed



CONTENTS

	<i>Page</i>
INTRODUCTION	1
AIM OF THE STUDY	3
REVIEW OF LITERATURE	
Definition fo aggression	4
Causes of aggression	6
Theories of aggression	14
Aggression-related factors	18
Clinical manifestations of aggressive patients	23
Incidence of aggression	26
Effects of aggression on nurses	29
Prevention of aggression	34
Management of aggressive behavior	37
Nursing intervention according to nursing process ...	42
SUBJECTS & METHODS	66
RESULTS	72
DISCUSSION	113
CONCLUSION	128
RECOMMENDATIONS	129
SUMMARY	131

CONTENTS (CONT.)

	<i>Page</i>
REFERENCES	135
APPENDIX	
ARABIC SUMMARY	

LSIT OF TABLES

	<i>Page</i>
Table (1): Number and percentage distribution of nurses according to their demographic data	73
Table (2): Circumstances related to non-acceptance to join the Psychiatric Department by nurses	78
Table (3): Nurses feelings at the start of their working with aggressive patients	79
Table (4): Nurses' feeling after working with aggressive patients	81
Table (5): Number and percentage distribution of nurses according to their reaction with aggressive patient ..	83
Table (6): Feeling of fear expressed by nurses working with aggressive patients	85
Table (7): Obstacles facing nursing working with aggressive patients	87
Table (8): Benefits of working in the aggressive patients' department	89
Table (9): Nurses' opinion about the appropriate mode of dealing with aggressive patients	91
Table (10): Relation between nurses knowledge about aggressive behavior and thier years of experience ...	93
Table (11): Relation between nurses knowledge about aggressive behavior and thier educational level	95
Table (12): Treatment of aggressive behavior according to nurses view	97
Table (13): Methods that the nurses follow to control the aggressive patient	99

LSIT OF TABLES (CONT.)

	<i>Page</i>
Table (14): Nurses' concepts about the effect of therapeutic activities	101
Table (15): Nurses' expression of needs for training	103
Table (16): Relation between nurses performance towards aggressive patients and their educational level	106
Table (17): Relation between nurses' performance towards the aggressive patient and their years of experience	108
18): Assessment of nurses' attitude towards the aggressive behavior in psychiatric hospitals	110