

# بسم الله الرحمن الرحيم



**HOSSAM MAGHRABY**



# شبكة المعلومات الجامعية

## التوثيق الالكتروني والميكروفيلم



**HOSSAM MAGHRABY**



# جامعة عين شمس

## التوثيق الإلكتروني والميكروفيلم

### قسم

نقسم بالله العظيم أن المادة التي تم توثيقها وتسجيلها  
على هذه الأقراص المدمجة قد أعدت دون أية تغيرات



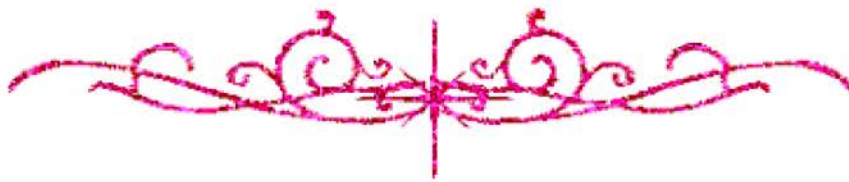
## يجب أن

تحفظ هذه الأقراص المدمجة بعيدا عن الغبار

**HOSSAM MAGHRABY**



# بعض الوثائق الأصلية تالفة



**HOSSAM MAGHRABY**





بالرسالة صفحات

لم ترد بالأصل



HOSSAM MAGHRABY

# EVALUATION OF TUBULARIZED INCISED PLATE URETHROPLASTY FOR MANAGEMENT OF DISTAL PENILE HYPOSPADIAS

B12260

## Thesis

Submitted in partial fulfilment of the requirements for the  
Master Degree in  
**UROLOGY**

Presented By

**Mohamed Hassan Eid Radwan**  
M.B.B.Ch.

## SUPERVISORS

Prof. Dr.

**MAHMOUD SAMY EL-MATTEET**

Professor of urology  
Faculty of medicine  
Tanta University

Dr.

**SAMIR EL-GAMAL**  
lecture of Urology  
Faculty of medicine  
Tanta University

Prof. Dr.

**MAHMOUD EL-SHARABY**  
Professor of Urology  
Faculty of medicine  
Tanta University

FACULTY OF MEDICINE  
TANTA UNIVERSITY  
2001



بِسْمِ اللَّهِ الرَّحْمَنِ الرَّحِيمِ

قَالُوا سُبْحَانَكَ لَا عِلْمَ لَنَا إِلَّا مَا

عَلَّمْنَا إِنَّكَ أَنْتَ الْعَلِيمُ

الْكَبِيرُ

صدق الله العظيم

البقرة (٣٢)





---

---

## ACKNOWLEDGEMENT

First of all, thanks go to **ALLAH** who allowed and helped me to complete this thesis.

Appreciation in full measure go to Prof. Dr. Mahmoud Sami El-Matteet, Professor of urology, Tanta Faculty of Medicine, for his kind supervision, continuous guidance, generous help, unlimited support, fruitful criticism and help during this work.

It gives me a great pleasure to express my sincere thanks and respectful appreciation to Prof. Dr. Mahmoud El-Sharaby, Professor of urology, Tanta Faculty of Medicine, for his generous advice, meticulous supervision, helpful instructions, expert observations.

I am also deeply indebted to Dr. Samir El-Gamal, lecture of urology, Tanta Faculty of Medicine, for his intimate contact, expert discussion, meticulous assistance and for providing me the material of this work.

Also, thanks are given to my Professors and colleagues in the department of urology, Tanta Faculty of Medicine who were willing to scrutinize and correct my work specially assistant prof. Dr. Tamer Felfela.

Finally, I continue to be indebted to my family and future family for their genuine support.

---

---

# CONTENTS



## CONTENTS

- *INTRODUCTION*-----1
- *AIM OF THE WORK*-----81
- *PATIENTS AND METHODS*-----82
- *RESULTS*-----103
- *DISCUSSION*-----118
- *SUMMARY*-----132
- *CONCLUSION*-----135
- *REFERENCES*-----137
- *ARABIC SUMMARY*-----

# ***INTRODUCTION***

### ANATOMY OF THE MALE

#### URETHRA

The male urethra acting as a conduit for both urinary and genital systems extends from the internal meatus to the external meatus at the tip of the glans penis (fig.1). It is about 18 - 20 cm long and may be considered in four regional parts; preprostatic, prostatic, membranous and penile urethra. The urethra presents a double curve while the penis is in its flaccid state. Except during passage of fluid along it, the urethral canal is a mere slit. <sup>(1)</sup>

#### **The Pre-Prostatic Urethra**

The pre-prostatic urethra possesses a stellate lumen and is about 1-1.7 cm in length, extending almost vertically from the bladder neck to the superior aspect of the prostatic gland. The non striated muscle bundles surrounding the bladder neck and the pre-prostatic urethra are arranged as distinct circular collar, which becomes continuous distally with the capsule of the prostatic gland. The bundles, which form this pre-prostatic or internal sphincter (sphincter vesicae) are separated by connective tissue containing many elastic fibers. <sup>(3)</sup>



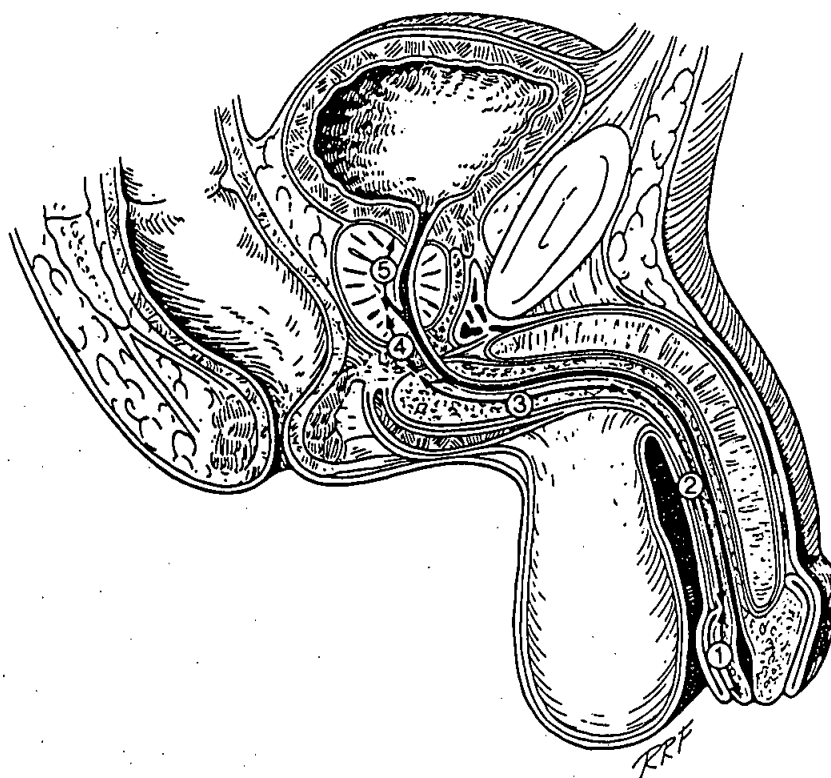


Fig. (1): Sagittal section of the penis.

- (1) Glanular, (2) penile, (3) Bulbous, (4) Membranous and  
(5) Prostatic. <sup>(2)</sup>