

سامية محمد مصطفى



شبكة المعلومات الجامعية

# بسم الله الرحمن الرحيم



سامية محمد مصطفى



شبكة المعلومات الجامعية



# شبكة المعلومات الجامعية التوثيق الالكتروني والميكرو فيلم





سامية محمد مصطفى



شبكة المعلومات الجامعية

# جامعة عين شمس

التوثيق الإلكتروني والميكروفيلم

## قسم

نقسم بالله العظيم أن المادة التي تم توثيقها وتسجيلها  
علي هذه الأقراص المدمجة قد أعدت دون أية تغيرات



## يجب أن

تحفظ هذه الأقراص المدمجة بعيدا عن الغبار



سامية محمد مصطفى



شبكة المعلومات الجامعية



# بعض الوثائق الأصلية تالفة





سامية محمد مصطفى



شبكة المعلومات الجامعية



# بالرسالة صفحات لم ترد بالأصل



**IN VITRO COMPARISON OF TENSILE  
RETENTIVITY OF CAST METAL AND READY  
MADE POSTS CEMENTED WITH SOME  
DIFFERENT LUTING AGENTS**

**By**  
***Khaled Ahmed Mahran***

(inv)  
[Signature]  
20/5/98

[Signature]



**A THESIS**

*Submitted to the Faculty of Oral and Dental Medicine,  
Cairo university,  
as a Partial Fulfillment of the requirements of the master degree in  
Crown and Bridge Prosthodontics*

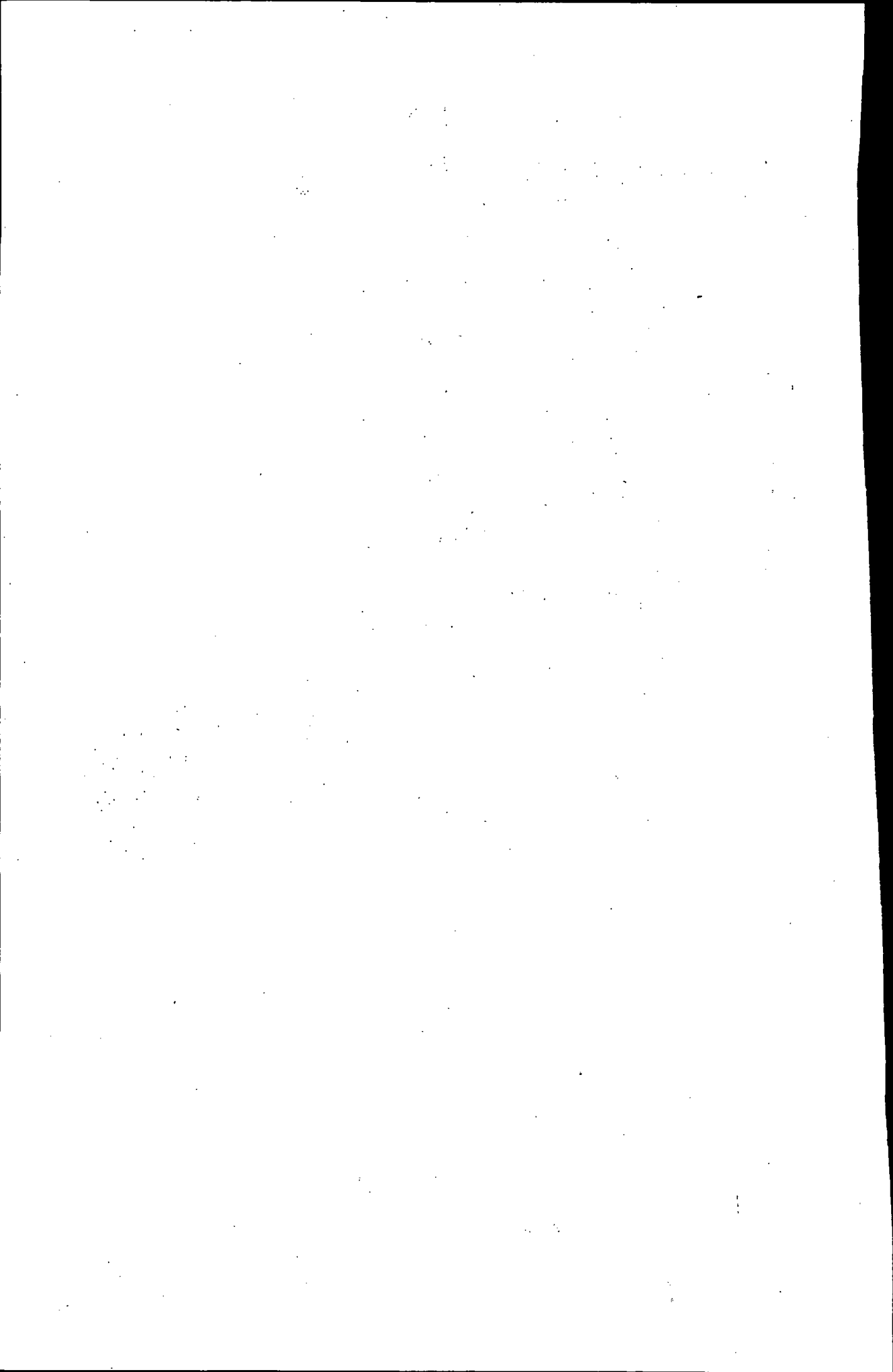
**1998**

B

[Signature]

[Signature]

10 V-E



## SUPERVISORS

*Dr. Hany Halim Nasr*

Professor of Crown and Bridge  
Prosthodontics, Faculty of Oral and  
Dental Medicine, Cairo University

*Dr. Ashraf Hussein Sherif*

Professor of Crown and Bridge  
Prosthodontics, Faculty of Oral and  
Dental Medicine, Cairo University



6  
11

11  
12  
13

1

## ***ACKNOWLEDGEMENT***

I would like to express my sincere thanks and deep appreciation to my Professor Dr. Hany Halim, Professor of Crown and Bridge, Prosthodontics, Faculty of Oral and Dental medicine, Cairo University, for his valuable guidance and excellent advice in all aspects of this research.

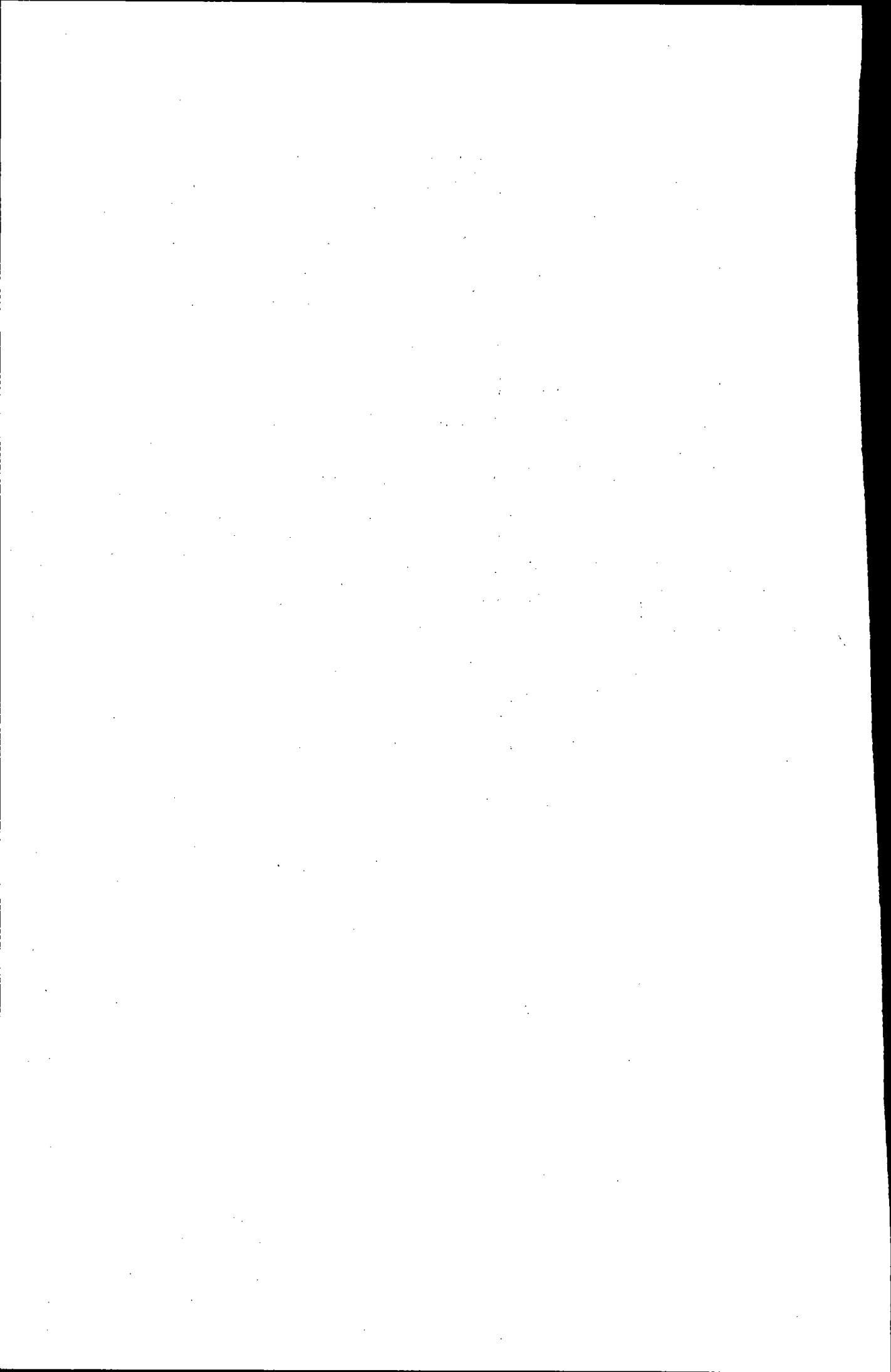
My deepest thanks and gratitude are also due to my Professor Dr. Ashraf Hussein, Professor of Crown and Bridge, prosthodontics, Faculty of Oral and Dental Medicine, Cairo University, for his considerable help and valuable guidance in all aspects of this work.

My sincere thanks are extended to Professor Dr. Fattouh Ramadan, Chairman of Crown and Bridge, Prosthodontics, faculty of oral and dental Medicine, Cairo, University for his guidance and support.

My deep thanks are also extended to Professor Dr. Wissam Ghazala Professor of Crown and Bridge, Prosthodontics, Faculty of Oral and Dental Medicine, Cairo University for his valuable suggestions.

Many thanks are due to chairman and staff membres of Material Properties, Faculty of Engineering, Cairo University for their help during laboratory work and testing samples of this research.

My deep thanks are also extended to Professor Dr. Enas El Attar Chriman of statistics, Tumours Institute, Cairo University, for her considerable help in the statistical analysis of the data of this work.





# *INDEX*

	<u>Page</u>
List of Figures	
List of Tables	
INTRODUCTION .....	1
REVIEW OF LITERATURE .....	4
AIM OF THE STUDY .....	22
MATERIALS AND METHODS .....	23
RESULTS .....	58
DISCUSSION .....	79
SUMMARY AND CONCLUSION .....	85
REFERENCES .....	88
ARABIC SUMMARY .....	

## *LIST OF FIGURES*

<u>Figure</u>		<u>Page</u>
1	The root block former	25
2	The specially constructed copper assembling	27
3	Diagram showing the measures of the device used for centralized the roots in acrylic block former.	28
4	Showing the copper assembling device holding the root in an exact vertical direction during immersion in the acrylic resin before self curing	29
5	The acrylic resin root block with the root in an exact centerilized vertical position	31
6	The smooth sided tapered cast metal post	33
7	The smooth parallel sided cast metal post	35
8	A) Ready made threaded split shaft tapered sided post (Flexi-post). B) Ready made serrated parallel-sided post (para-post) C) Ready made threaded tapered-sided post (Dentatus post)	36
9	Dentatus system drill	38
10	The special drill of para-post system	43
11	The ready made plastic patterns of para-post system	44
12	The special drills of dentatus post	45
13	The special drill used for creating post hole for the flexi-post.	47
14	Special load applicator	49
15	Diagram showing the load applicator	50
16	The lower compartment cylindrical metal in shape with central hole adjustment to lower arm of the universal testing machine.	54
17	Diagram showing the dimensions of lower compartment which holds the block former.	55
18	The upper compartment which has holding screw to catch the head of the post and fitting to the upper arm of the testing machine	56
19	Diagram showing the dimensions upper compartment which catch the head of post and holded by the upper jaw of the testing machine.	57
20	Effect of post design on retentivity in (kg)	59
21	Effect of post shape on retentivity in (kg)	63
22	Effect of post surface configuration on retentivity in (kg)	65
23	Effect of zinc phosphate cement on retentivity of all types of posts in (kg.)	68
24	Effect of Glass ionomer cement on retentivity of all types of posts	69

<u>Figure</u>		<u>Page</u>
25	Effect of resin cement on retentivity of all types of posts.	70
26	Showing the failure of zinc phosphate cement with ready made posts	71
	A) Para-post.                      B) Flexi-post	
	C) Dentatus post and              D) cast post	
27	Showing failure of the glass ionomer cement with	75
	A) Dentatus post                      B) Para-post	
	C) Cast-post                          D) Flexi-post.	
28	Showing failure of resin cement with different dowel systems:	77
	a) Dentatus post                      b) Para-post	
	c) Flexi-post                          d) Cast post.	



## *LIST OF TABLES*

<u>Table</u>		<u>Page</u>
1	The different types of posts and luting agents used in this study and the number of samples of each group.	32
2	The means and standard deviations of the tensile forces (in kg) required to dislodge the different types of posts with different types of cements.	60
3	The means and standard deviations of tensile force (in kg) for threaded and unthreaded posts using zinc Ph. Cement.	60
4	The means and standard deviations of tensile force (in kg) for threaded and unthreaded posts in case of resin cement.	61
5	The means and standard deviations of tensile force for threaded and unthreaded posts in case of Glass Ionomer Cement.	61
6	The means and standard deviations of tensile force (in kg) in case of cast tapered and cast parallel posts using Zinc Phosphate Cement.	62
7	The means and standard deviations of tensile force (in kg) in case of cast tapered and cast parallel posts using Resin Cement.	62
8	The means and standard deviations of tensile force (in kg) in case of cast tapered and cast parallel posts using Glass Ionomer Cement.	64
9	The means and standard deviations of tensile force (in kg) in case of smooth and serrated parallel surface posts using Zinc phosphate cement.	64
10	The means and standard deviations of tensile force (in kg) in case of smooth and serrated parallel surface posts using Resin Cement.	66
11	The means and standard deviations of tensile force (in kg) in case of smooth and serrated parallel surface posts using Glass Ionomer Cement.	66
12	The means and standard deviations of Tensile force required to dislodge the posts fixed with three different types of cements.	72
13	Failure of zinc phosphate cement with tapered and parallel sided posts.	73
14	Failure of zinc phosphate cement with flexi-post, dentatus post and para post.	73
15	Failure of glass ionomer with tapered and parallel sided posts.	74