

سامية محمد مصطفى



شبكة المعلومات الجامعية

بسم الله الرحمن الرحيم



سامية محمد مصطفى



شبكة المعلومات الجامعية



شبكة المعلومات الجامعية التوثيق الالكتروني والميكروفيلم



سامية محمد مصطفى



شبكة المعلومات الجامعية

جامعة عين شمس

التوثيق الإلكتروني والميكروفيلم

قسم

نقسم بالله العظيم أن المادة التي تم توثيقها وتسجيلها
علي هذه الأقراص المدمجة قد أعدت دون أية تغيرات



يجب أن

تحفظ هذه الأقراص المدمجة بعيدا عن الغبار



سامية محمد مصطفى



شبكة المعلومات الجامعية



بعض الوثائق الأصلية تالفة



سامية محمد مصطفى



شبكة المعلومات الجامعية



بالرسالة صفحات
لم ترد بالأصل



**EVALUATION OF ENDOTHELIAL
ABNORMALITIES
ASSOCIATED WITH BEHCET'S DISEASE**

THESIS

Submitted In Partial Fulfillment For Master Degree
In Clinical & Chemical Pathology

BY

Hanaa Mosa Ahmed

SUPERVISORS

PROF. DR. BAHIA AHMED EL-MASRI

Prof. of Clinical and Chemical Pathology
Cairo University

DR. HALA GABR METWALLY

Lecturer of Clinical and Chemical Pathology
Faculty of Medicine
Cairo University

DR. SOMIA ANWAR HUSSIN

Lecturer of Rheumatology and Rehabilitation
Faculty of Medicine
Cairo University

Faculty of Medicine
Cairo University
2000

B

10 V 3 E

James M. Smith, Jr., 1985

... ..

the 1990s, the number of people in the United States who are 65 years of age or older is projected to increase from 20 million to 35 million, and the number of people 75 years of age or older is projected to increase from 10 million to 15 million (U.S. Census Bureau, 1996). The number of people 85 years of age or older is projected to increase from 2 million to 4 million (U.S. Census Bureau, 1996). The number of people 90 years of age or older is projected to increase from 500,000 to 1 million (U.S. Census Bureau, 1996). The number of people 95 years of age or older is projected to increase from 100,000 to 200,000 (U.S. Census Bureau, 1996). The number of people 100 years of age or older is projected to increase from 10,000 to 20,000 (U.S. Census Bureau, 1996).

the 1990s, the number of people in the world who are under 15 years of age is expected to increase by 1.5 billion, from 1.1 billion in 1990 to 2.6 billion in 2010. The number of people aged 65 and over is expected to increase by 1 billion, from 350 million in 1990 to 1.4 billion in 2010. The number of people aged 15-64 is expected to increase by 1.5 billion, from 2.5 billion in 1990 to 4.0 billion in 2010. The number of people aged 65 and over is expected to increase by 1 billion, from 350 million in 1990 to 1.4 billion in 2010. The number of people aged 15-64 is expected to increase by 1.5 billion, from 2.5 billion in 1990 to 4.0 billion in 2010.

1. *Chlorophyll a* and *Chlorophyll b* were determined by the method of Arar and Collins (1971) using a Shimadzu 1601 spectrophotometer. The concentration of chlorophyll was expressed in $\mu\text{g mL}^{-1}$ of the sample.

1. *Chlorophyll a* and *Chlorophyll b* were determined by the method of Arar and Collins (1971).

1998, 1999, 2000, 2001, 2002, 2003, 2004, 2005, 2006, 2007, 2008, 2009, 2010, 2011, 2012, 2013, 2014, 2015, 2016, 2017, 2018, 2019, 2020, 2021, 2022, 2023, 2024, 2025, 2026, 2027, 2028, 2029, 2030, 2031, 2032, 2033, 2034, 2035, 2036, 2037, 2038, 2039, 2040, 2041, 2042, 2043, 2044, 2045, 2046, 2047, 2048, 2049, 2050, 2051, 2052, 2053, 2054, 2055, 2056, 2057, 2058, 2059, 2060, 2061, 2062, 2063, 2064, 2065, 2066, 2067, 2068, 2069, 2070, 2071, 2072, 2073, 2074, 2075, 2076, 2077, 2078, 2079, 2080, 2081, 2082, 2083, 2084, 2085, 2086, 2087, 2088, 2089, 2090, 2091, 2092, 2093, 2094, 2095, 2096, 2097, 2098, 2099, 2100, 2101, 2102, 2103, 2104, 2105, 2106, 2107, 2108, 2109, 2110, 2111, 2112, 2113, 2114, 2115, 2116, 2117, 2118, 2119, 2120, 2121, 2122, 2123, 2124, 2125, 2126, 2127, 2128, 2129, 2130, 2131, 2132, 2133, 2134, 2135, 2136, 2137, 2138, 2139, 2140, 2141, 2142, 2143, 2144, 2145, 2146, 2147, 2148, 2149, 2150, 2151, 2152, 2153, 2154, 2155, 2156, 2157, 2158, 2159, 2160, 2161, 2162, 2163, 2164, 2165, 2166, 2167, 2168, 2169, 2170, 2171, 2172, 2173, 2174, 2175, 2176, 2177, 2178, 2179, 2180, 2181, 2182, 2183, 2184, 2185, 2186, 2187, 2188, 2189, 2190, 2191, 2192, 2193, 2194, 2195, 2196, 2197, 2198, 2199, 2200, 2201, 2202, 2203, 2204, 2205, 2206, 2207, 2208, 2209, 2210, 2211, 2212, 2213, 2214, 2215, 2216, 2217, 2218, 2219, 2220, 2221, 2222, 2223, 2224, 2225, 2226, 2227, 2228, 2229, 2230, 2231, 2232, 2233, 2234, 2235, 2236, 2237, 2238, 2239, 2240, 2241, 2242, 2243, 2244, 2245, 2246, 2247, 2248, 2249, 2250, 2251, 2252, 2253, 2254, 2255, 2256, 2257, 2258, 2259, 2260, 2261, 2262, 2263, 2264, 2265, 2266, 2267, 2268, 2269, 2270, 2271, 2272, 2273, 2274, 2275, 2276, 2277, 2278, 2279, 2280, 2281, 2282, 2283, 2284, 2285, 2286, 2287, 2288, 2289, 2290, 2291, 2292, 2293, 2294, 2295, 2296, 2297, 2298, 2299, 2300, 2301, 2302, 2303, 2304, 2305, 2306, 2307, 2308, 2309, 2310, 2311, 2312, 2313, 2314, 2315, 2316, 2317, 2318, 2319, 2320, 2321, 2322, 2323, 2324, 2325, 2326, 2327, 2328, 2329, 2330, 2331, 2332, 2333, 2334, 2335, 2336, 2337, 2338, 2339, 2340, 2341, 2342, 2343, 2344, 2345, 2346, 2347, 2348, 2349, 2350, 2351, 2352, 2353, 2354, 2355, 2356, 2357, 2358, 2359, 2360, 2361, 2362, 2363, 2364, 2365, 2366, 2367, 2368, 2369, 2370, 2371, 2372, 2373, 2374, 2375, 2376, 2377, 2378, 2379, 2380, 2381, 2382, 2383, 2384, 2385, 2386, 2387, 2388, 2389, 2390, 2391, 2392, 2393, 2394, 2395, 2396, 2397, 2398, 2399, 2400, 2401, 2402, 2403, 2404, 2405, 2406, 2407, 2408, 2409, 2410, 2411, 2412, 2413, 2414, 2415, 2416, 2417, 2418, 2419, 2420, 2421, 2422, 2423, 2424, 2425, 2426, 2427, 2428, 2429, 2430, 2431, 2432, 2433, 2434, 2435, 2436, 2437, 2438, 2439, 2440, 2441, 2442, 2443, 2444, 2445, 2446, 2447, 2448, 2449, 2450, 2451, 2452, 2453, 2454, 2455, 2456, 2457, 2458, 2459, 2460, 2461, 2462, 2463, 2464, 2465, 2466, 2467, 2468, 2469, 2470, 2471, 2472, 2473, 2474, 2475, 2476, 2477, 2478, 2479, 2480, 2481, 2482, 2483, 2484, 2485, 2486, 2487, 2488, 2489, 2490, 2491, 2492, 2493, 2494, 2495, 2496, 2497, 2498, 2499, 2500, 2501, 2502, 2503, 2504, 2505, 2506, 2507, 2508, 2509, 2510, 2511, 2512, 2513, 2514, 2515, 2516, 2517, 2518, 2519, 2520, 2521, 2522, 2523, 2524, 2525, 2526, 2527, 2528, 2529, 2530, 2531, 2532, 2533, 2534, 2535, 2536, 2537, 2538, 2539, 2540, 2541, 2542, 2543, 2544, 2545, 2546, 2547, 2548, 2549, 2550, 2551, 2552, 2553, 2554, 2555, 2556, 2557, 2558, 2559, 2560, 2561, 2562, 2563, 2564, 2565, 2566, 2567, 2568, 2569, 2570, 2571, 2572, 2573, 2574, 2575, 2576, 2577, 2578, 2579, 2580, 2581, 2582, 2583, 2584, 2585, 2586, 2587, 2588, 2589, 2590, 2591, 2592, 2593, 2594, 2595, 2596, 2597, 2598, 2599, 2600, 2601, 2602, 2603, 2604, 2605, 2606, 2607, 2608, 2609, 2610, 2611, 2612, 2613, 2614, 2615, 2616, 2617, 2618, 2619, 2620, 2621, 2622, 2623, 2624, 2625, 2626, 2627, 2628, 2629, 2630, 2631, 2632, 2633, 2634, 2635, 2636, 2637, 2638, 2639, 2640, 2641, 2642, 2643, 2644, 2645, 2646, 2647, 2648, 2649, 2650, 2651, 2652, 2653, 2654, 2655, 2656, 2657, 2658, 2659, 2660, 2661, 2662, 2663, 2664, 2665, 2666, 2667, 2668, 2669, 2670, 2671, 2672, 2673, 2674, 2675, 2676, 2677, 2678, 2679, 26

100

13

•

• • •

2000

bioRxiv preprint doi: <https://doi.org/10.1101/2019.05.20.247400>; this version posted May 20, 2019. The copyright holder for this preprint (which was not certified by peer review) is the author/funder, who has granted bioRxiv a license to display the preprint in perpetuity. It is made available under aCC-BY-NC-ND 4.0 International license.

•

44

•

• • •

•

100

•

•

مقدم من الأستاذ الدكتور / محمد عبد الحليم
أستاذ الباثولوجيا الكلينيكية بجامعة

رسالة ماجستير / دكتوراة / الخاصة بالطبيب / هناك موسى أحمد جادو
طبة الباطن على درجة : الماجستير في تخصص : الباثولوجيا الكلينيكية
عنوان : باللغة الانجليزية : Evaluation of endothelial abnormalities associated with Behcet's disease

باللغة العربية : تقييم التغيرات الوعائية الجلدية لدى مرضى
الموتيرة المتأخرة لمرض بيهكت

قامت الطالبة بدرية الاندريه من طلبة

كلية الطب جامعة القاهرة في إطار التدريب على أطباء الباطن في

قسم الباطن في مستشفى عين شمس التخصصي في

الطابق الرابع في قسم الباطن في مستشفى عين شمس التخصصي في

قسم الباطن في مستشفى عين شمس التخصصي في

قسم الباطن في مستشفى عين شمس التخصصي في

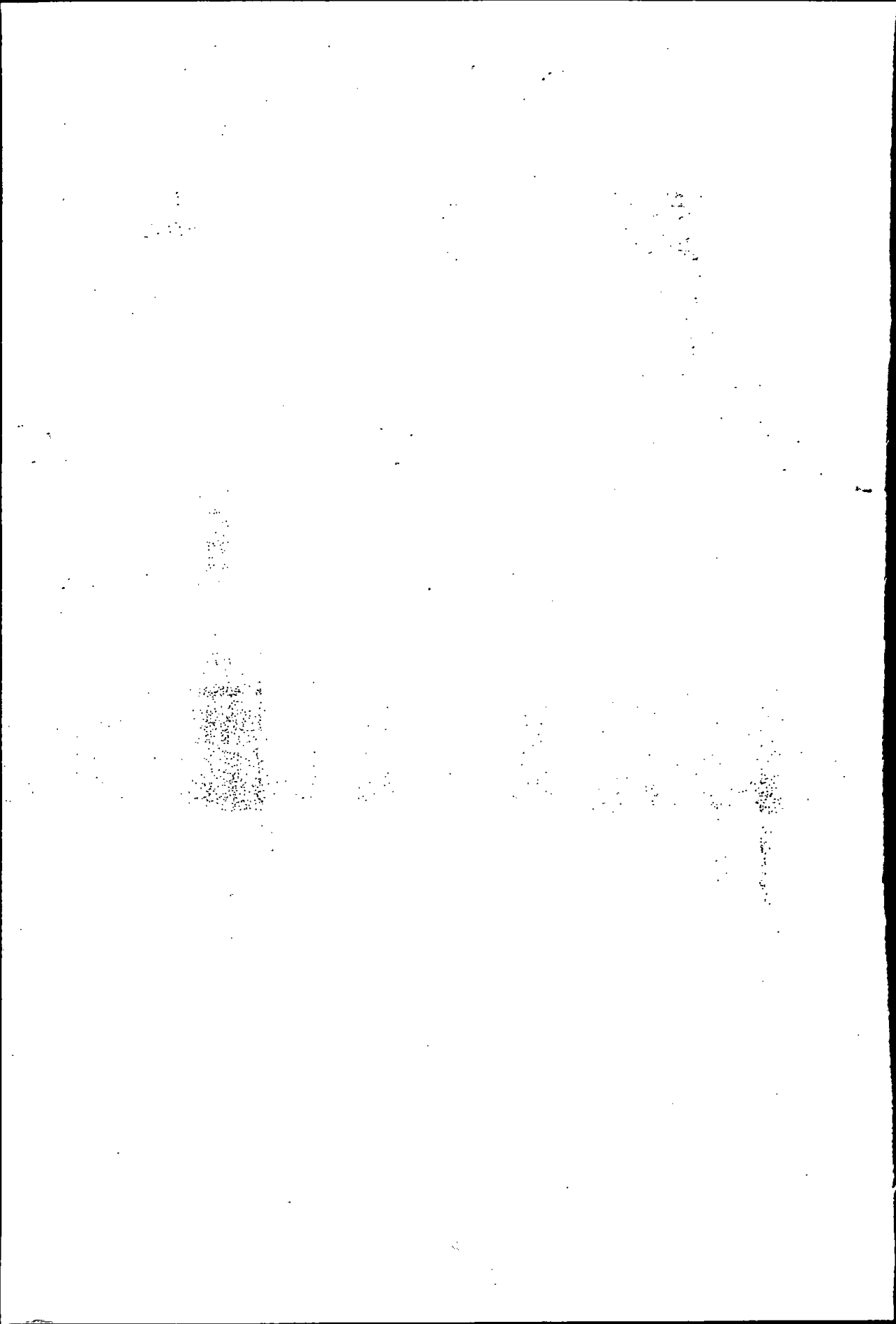
قسم الباطن في مستشفى عين شمس التخصصي في

قسم الباطن في مستشفى عين شمس التخصصي في

التوقيع

أحمد

(place)



ABSTRACT

Endothelial cells form a monolayer that lines the active vascular system. The structural and functional integrity of endothelium is a fundamental requirement for maintenance of vessel wall homeostasis.

(The term endothelial dysfunction is often used to describe several types of potentially reversible changes in the functional state of ECs that occur as a response to environmental factors (Schoen, 1994).)

Behcet's disease. BD is an autoimmune chronic disorder that is originally characterised by recurrent uveitis and mouth and genital ulcerations. Many other organs may be affected as a result of generalised vasculitis.

Increased plasma levels of ET-1 in patients with BD may be attributable to increased secretion or leakage of this mitogen from injured vascular endothelial cells.

Antibodies to endothelial cells are autoantibodies detected in many immune-mediated disorders

the presence of high ET-1 level among subset of patients with BD and this increase was associated with disease activity. Also, MIC IDX is a more significant marker of vascular injury in relation to BD.

KEY WORDS

Behcet's disease - ET-1 - Antiendothelial antibodies.

Journal of Management Education 30(6)

ACKNOWLEDGEMENT

I would like to express my deepest gratitude to Professor Dr. BAHIA A. EL-MASRI, Professor of Clinical and Chemical pathology, Cairo University who has given me her generous and continuous help to make this work come to reality. Her experience and wide knowledge were of great use to show me the right way to complete this work.

My sincere gratitude and deep appreciation to Dr. HALA G. METWALLY, Lecturer of Clinical and Chemical Pathology, Cairo University for her most generous attitude and everlasting cooperation and understanding. I have benefited from her worthy advice and valuable direction and I shall always be proud to have worked under her direct guidance.

I have pleasure to express my deepest respect and profound appreciation to Dr. SOMAYA A- HUSSIN, Lecturer of Rheumatology and Rehabilitation, Cairo University for her valuable supervision, continuous guidance and encouragement. It was a great honour to work under her supervision.

I am deeply grateful to professor Dr. SALAH EL- DIN EL-ASHMAOI, professor of Clinical and Chemical Pathology, Cairo University for his cooperation, valuable advice and generous help.

Lastly, but not leastly, I wish to express my thanks to my family and to my colleagues who supported me during this work.

HANAA MOSA

2000

To My Father,
My Husband
And Son

