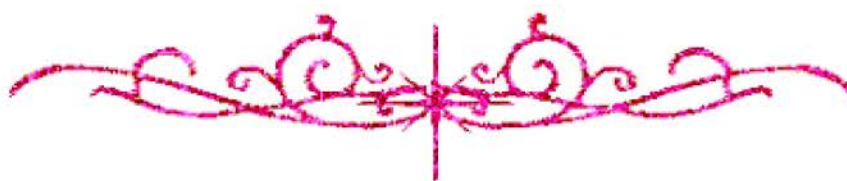


سامية محمد مصطفى



شبكة المعلومات الجامعية

# بسم الله الرحمن الرحيم



سامية محمد مصطفى



شبكة المعلومات الجامعية



# شبكة المعلومات الجامعية التوثيق الالكتروني والميكرو فيلم





سامية محمد مصطفى



شبكة المعلومات الجامعية

# جامعة عين شمس

التوثيق الإلكتروني والميكروفيلم

## قسم

نقسم بالله العظيم أن المادة التي تم توثيقها وتسجيلها  
علي هذه الأقراص المدمجة قد أعدت دون أية تغيرات



## يجب أن

تحفظ هذه الأقراص المدمجة بعيدا عن الغبار



سامية محمد مصطفى



شبكة المعلومات الجامعية



# بعض الوثائق الأصلية تالفة





سامية محمد مصطفى



شبكة المعلومات الجامعية



# بالرسالة صفحات لم ترد بالأصل



**EVALUATION OF HOMOCYSTEINE LEVEL  
IN SIBLINGS OF PATIENTS WITH CORONARY  
ARTERY DISEASE**

*thesis*

Submitted For Partial Fulfillment of The Master Degree  
In Clinical and Chemical Pathology

*Presented by*

**ABEER IBRAHIM IBRAHIM**  
M.B.B.Ch

*Supervised by*

**PROF.DR / INAS EL-SHAARAWY**

Professor of Clinical and Chemical Pathology  
Benha Faculty of Medicine

**PROF.DR / MAGDA ABD ELAZIZ ZEIDAN**

Professor of Clinical and Chemical Pathology  
Benha Faculty of Medicine

**ASS. PROF.DR / OSAMA SANAD**

Ass. Prof. Of Cardiology  
Benha Faculty of Medicine

**DR/ MOHAMED EL-SHAFEE**

Lecturer of Clinical and Chemical Pathology  
Benha Faculty of Medicine

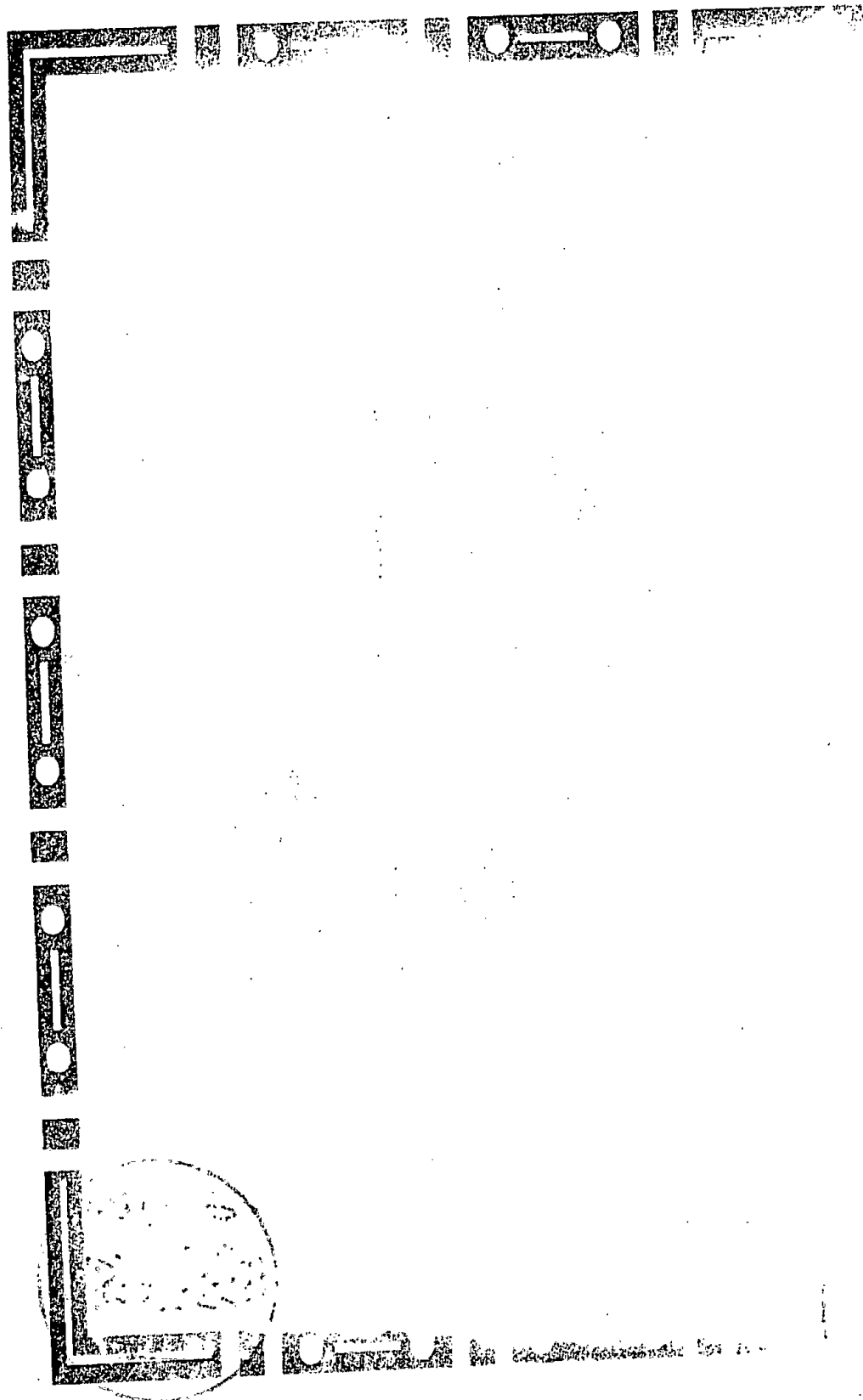
CLINICAL PATHOLOGY DEPARTMENT  
FACULTY OF MEDICINE  
ZAGAZIG UNIVERSITY

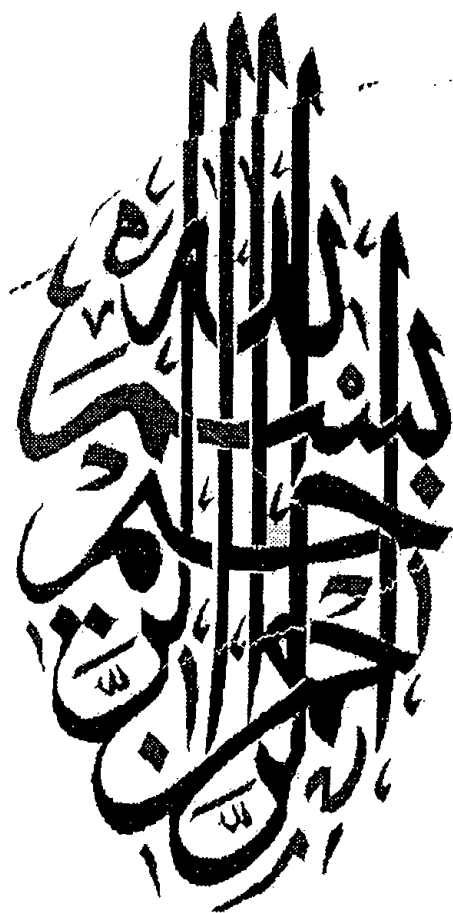
2000



B

102730







---

## ACKNOWLEDGEMENT

*First of all thanks to GOD ,the most graceful and merciful.*

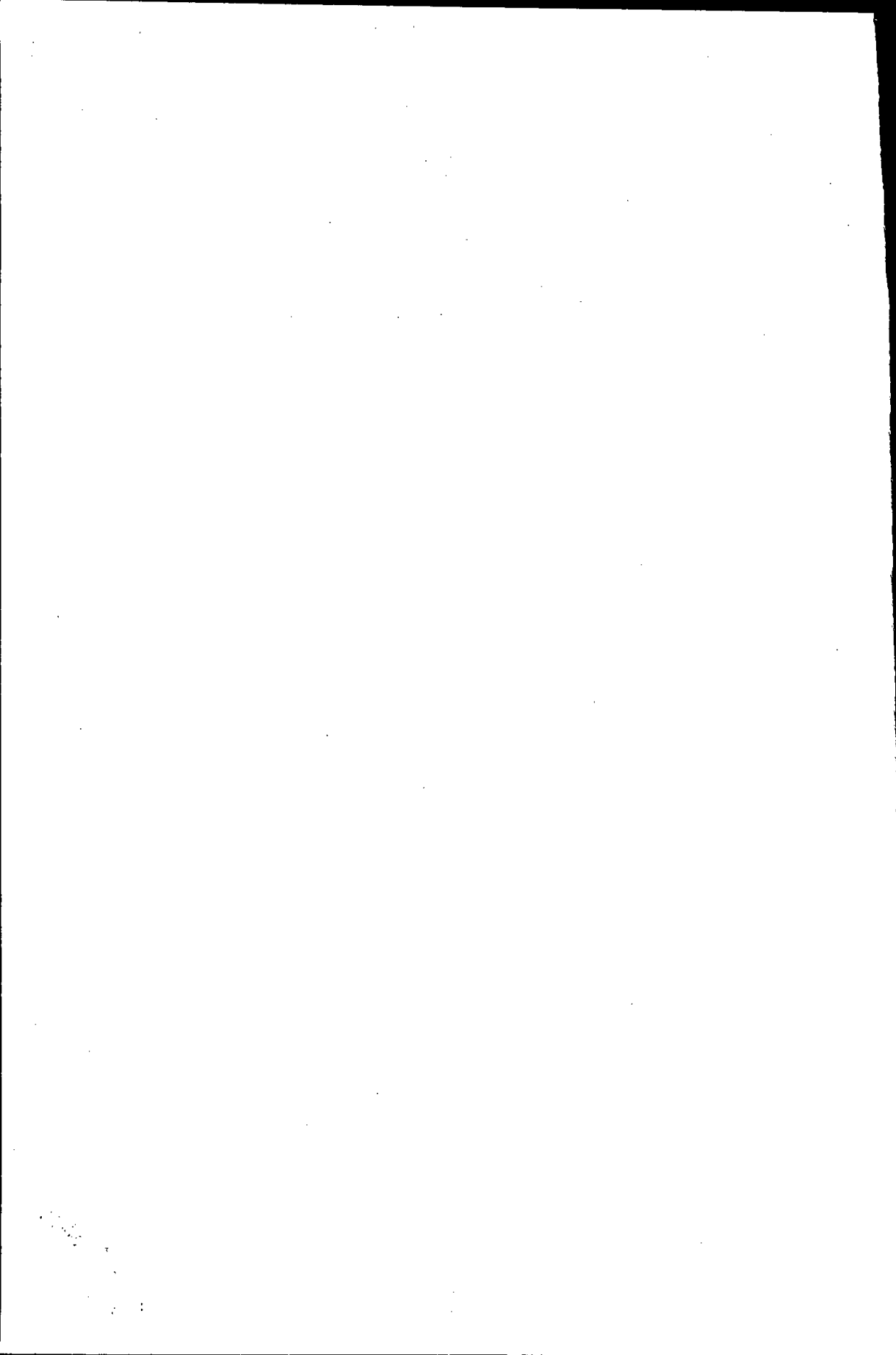
I wish particularly to express my deepest gratitude and appreciation to PROFESSOR *Dr. INAS EL-SHAARAWY*, Professor of Clinical and Chemical Pathology, Benha faculty of Medicine , for her continuous encouragement, excellent advice, constant support and generous help.

I wish to express my thanks to Professor *Dr. MAGDA ABD ELAZIZ*, Professor of Clinical and Chemical Pathology, Benha Faculty of Medicine. for her continuous support and help through the work.

I wish to express my thanks to *Dr. OSAMA SANAD* Assistant Professor of Cardiology, Benha Faculty of Medicine, who kindly assisted me in this work and for his generous help and encouragement through the work.

I wish to express my special thanks to *Dr. MOHAMED EL-SHAFAE* lecturer of Clinical and Chemical Pathology, Benha Faculty of Medicine, who sacrificed a good deal of his precious time, for his constant guidance and help throughout the preparation of this thesis. Every step, every detail has been kindly assisted by his untiring effort.

---



**DEDICATION**

**TO**

**MY FAMILY**

***MY HUSBAND, MY FATHER AND  
MY BEAUTY GIRLS***



# LIST OF PLANTS

1966 No.

31

32

33

34

35

36

37

38

## LIST OF TABLES

Table No.	Title	Page No.
1	Hyperhomocysteinemia and factors affecting homocysteine metabolism.	18
2	Serum blood glucose levels in cases and controls	61
3	Serum creatinine levels in cases and controls.	62
4	Serum lipid levels in cases and controls.	63
5	Total plasma homocysteine levels in cases and controls.	64
6	Plasma folic acid in cases and controls.	65
7	Master sheet of control group.	72
8	Master sheet of cases group.	73





## LIST OF FIGURES

Figure No.	Title	Page
1	Homocysteine Metabolic pathways	3
2	Methionine cycle.	5
3	Mean levels of serum blood glucose in siblings and control group.	61
4	Mean levels of serum creatinine in siblings and control group.	62
5	Mean levels of lipid profile in siblings and control group.	63
6	Mean levels of total plasma homocysteine in siblings and control group.	64
7	Mean levels of plasma folic acid in siblings and control group.	65
8	Correlation study between homocysteine level and serum folic acid levels.	66
9	Correlation study between homocysteine level and serum blood glucose levels.	67
10	Correlation study between homocysteine level and serum cholesterol levels.	68
11	Correlation study between homocysteine level and serum high density lipoproteine cholesterol level.	69
12	Correlation study between homocysteine level and serum low density lipoproteine cholesterol level	70
13	Correlation study between homocysteine level and serum triglycerides level	71