

سامية محمد مصطفى



شبكة المعلومات الجامعية

بسم الله الرحمن الرحيم



سامية محمد مصطفى



شبكة المعلومات الجامعية



شبكة المعلومات الجامعية التوثيق الالكتروني والميكروفيلم



سامية محمد مصطفى



شبكة المعلومات الجامعية

جامعة عين شمس

التوثيق الإلكتروني والميكروفيلم

قسم

نقسم بالله العظيم أن المادة التي تم توثيقها وتسجيلها
علي هذه الأقراص المدمجة قد أعدت دون أية تغيرات



يجب أن

تحفظ هذه الأقراص المدمجة بعيدا عن الغبار



سامية محمد مصطفى



شبكة المعلومات الجامعية



بعض الوثائق الأصلية تالفة



سامية محمد مصطفى



شبكة المعلومات الجامعية



بالرسالة صفحات لم ترد بالأصل



***Determine the Prevalence of Suicidal
Behaviors , Some Risk Factors and Warning
Signs Among Secondary School Students in
Ismailia City***

Protocol for a thesis submitted for partial fulfillment of
Master degree in neuropsychiatry

By

61698

Haydy Hassan Sayed Ahmed

M.B.B.Ch (October 2001)

Faculty of Medicine

Suez Canal University

Supervisor

Prof. Ismail Mohammad Youssef

Professor of Neuropsychiatry

Faculty of Medicine

Suez Canal University

Dr. Ahmed Osama Hosny

Assistant Professor of Neurology

Faculty of Medicine

Suez Canal University

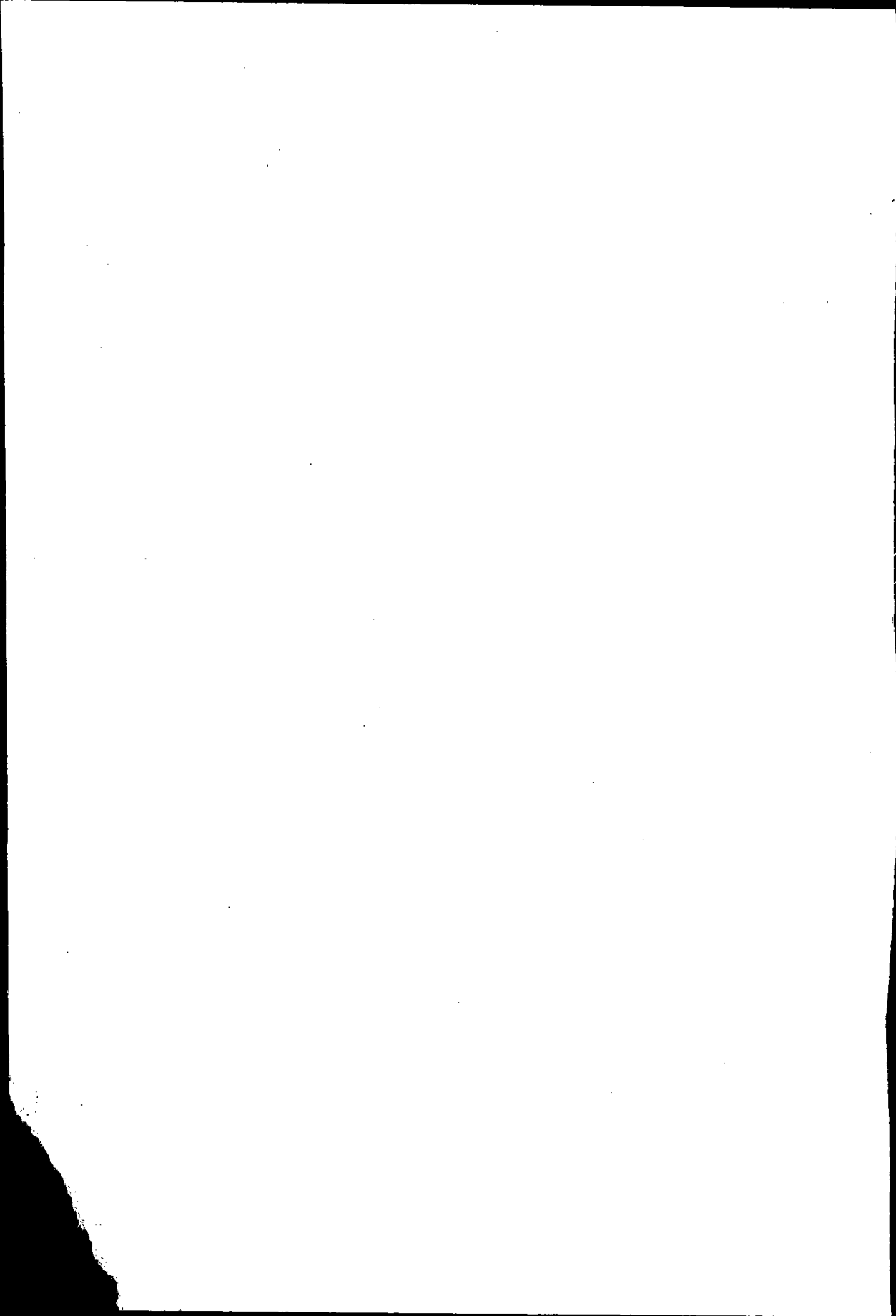
Suez Canal University

Faculty of medicine

2005 – 2006

B

10-1V



الحمد لله الرحمن الرحيم

Acknowledgment

Praise to Allah , the master of the universe , and most merciful ..

I wish to thank **Prof.. Dr. Ismail mohammad yossef** , Chairman Of Neuropsychiatry Department , for his help , his support and his patience.

I also like to express my appreciation to the **Prof. Dr. Ahmed osama hosny** , assistant Professor Of Neurology for his cooperation .

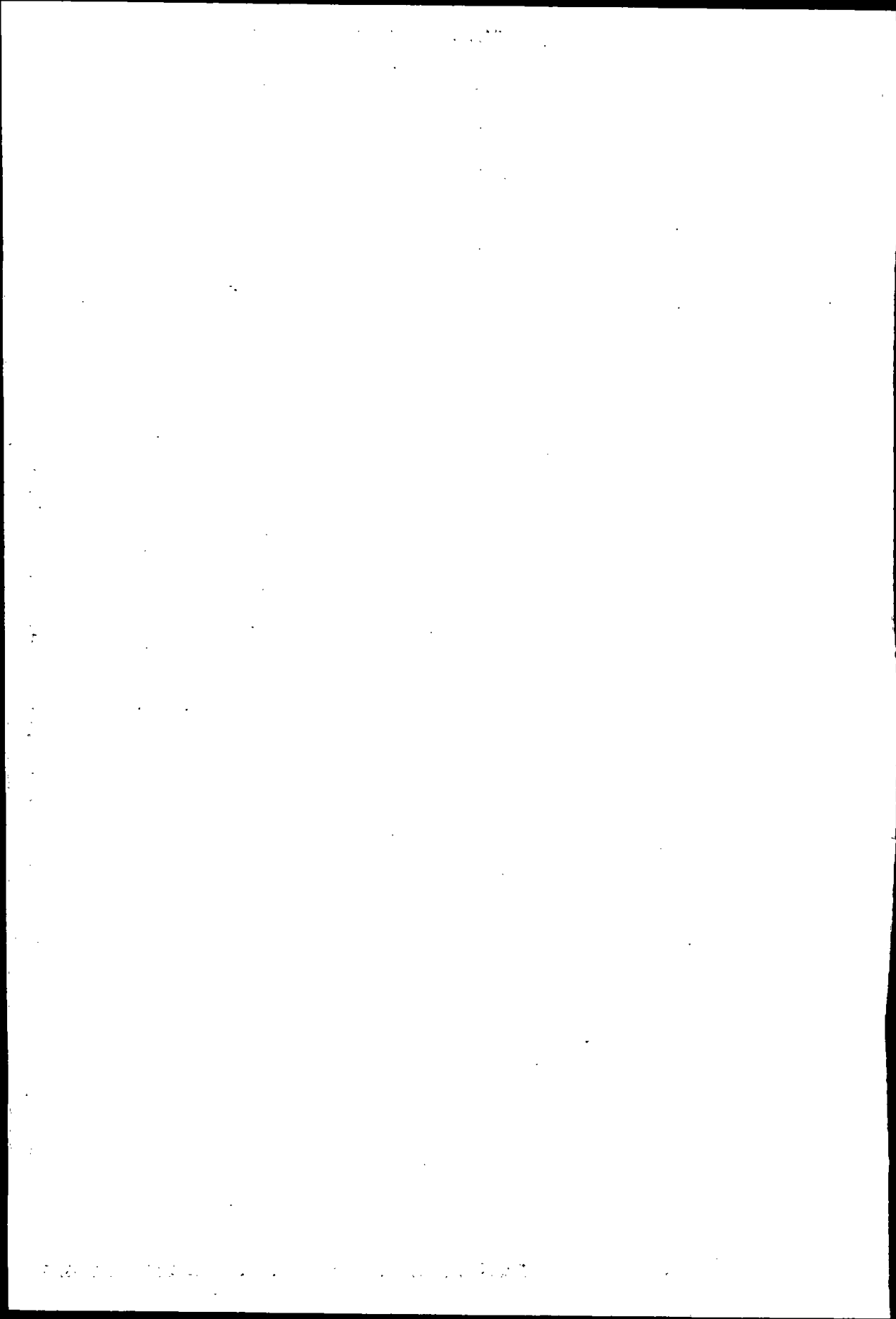
I also like to express my appreciation to **Dr . Khaled Abd Elmoez** , lecturer of Neuropsychiatry , for his support and cooperation

I also like to express ~~my~~ express my appreciation to **Dr . Osman Osman Ibrahim** , for his help and support .

I wish to thank all students that participate in this study for their cooperation .

Contents

	Page
INTRODUCTION	1
RATIONALE	9
AIM OF THE WORK	10
REVIEW OF LITERATURE	11
METHODOLOGY	87
RESULTS	96
DISCUSSION	115
RECOMMENDATIONS	129
SUMMARY AND CONCLUSIONS	130
REFERENCES	132
APPENDIX	424
ARABIC SUMMARY	



List of Tables

	Page
Table (1): Gender distribution of the prevalence of suicide attempts among the secondary school students in Ismailia City.	97
Table (2): Prevalence of the of risk factors among secondary school students in Ismailia City.	98
Table (3): Gender distribution of risk factors among secondary school students in Ismailia City.	99
Table (4): Relation between risk factors and suicide attempt among the secondary school students in Ismailia City.	100
Table (5): Prevalence of warning signs of suicide among the secondary school students in Ismailia City.	101
Table (6): Gender distribution of the warning signs of suicide among the secondary school students in Ismailia City.	102
Table (7): Relation between warning signs and suicidal attempt among secondary school students in Ismailia City.	103
Table (8): Prevalence of different method of suicide among secondary school students in Ismailia City.	104
Table (9): Gender distribution of different methods of suicide among secondary school students in Ismailia City.	105

Table (10) :	Prevalence of number of suicide attempts among secondary school students in Ismailia City.	106
Table (11) :	Gender distribution of number of suicide attempts among secondary school students in Ismailia City.	107
Table (12) :	Prevalence of causes of suicide among secondary school students in Ismailia City.	108
Table (13) :	Gender distribution of suicide thinking among secondary school students in Ismailia City.	110
Table (14) :	Prevalence of suicide plan among secondary school students in Ismailia City.	111
Table (15) :	Prevalence of receiving treatment of suicide among secondary school students in Ismailia City.	113
Table (16) :	Prevalence of students that will try again suicide attempt among secondary school students in Ismailia City.	114